

G2 misuratori

Water and heat meters



Mod. SDF-R500

DN 50/40 - 2"/1.1/2" (threaded)

DN 50 - 2" (threaded)

DN 50 - 2" (flanged)

DN 65 - 2.1/2" (flanged)

DN 80 - 3" (flanged)

DN 100 - 4" (flanged)

DN 150 - 6" (flanged)

DN 200 - 8" (flanged)

DN 250 - 10" (flanged)

DN 300 - 12" (flanged)

**MID R500 approved
in any position**

ULTRASONIC

- ❑ Dual beam ultrasonic technology for precise and ultra reliable metering: **high accuracy starting from 25 l/h**
- ❑ **Long-term stability of metrological performances**
- ❑ **SDF-R500** mod. sizes from DN 50/40 to DN 300, temperature class T50, measuring range **R500**
- ❑ Applications: waterworks, industrial and irrigation applications (with filtered water)
- ❑ Battery powered with **15-year-** working life
- ❑ Multi line 9 digit LC display
- ❑ Protection grade **IP68**
- ❑ Instantaneous flow rate reading
- ❑ U0-D0: the water meter can be installed in any position. The meter must be fill with water all the time; non special requirements for installation
- ❑ All models are approved according to **MID Directive 2004/22/CE** (modules B+D), in compliance with **EN 14154, OIML R49** and **ISO 4064** norms
- ❑ Body made of cast iron, with external epoxy painting, approved for use with potable water according to **D.M. 174** dated 6th april 2004
- ❑ Pre-set for analogic output 4-20mA, forward flow. On request other options available: digital outputs open collector and dry contact

ULTRASONIC

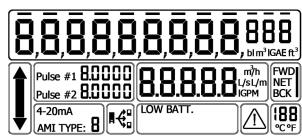


SDF model
Temperature class T50
SDF-R500
DN 50/40 / 50
65 / 80 / 100
150 / 200
250 / 300

Technical data – DN in mm	50/40 ¹		50		50		65		80		100		150		200		250		300	
	threaded	threaded	flanged	flanged	flanged	flanged	flanged	flanged	flanged	flanged	flanged	flanged	flanged	flanged	flanged	flanged	flanged	flanged	flanged	flanged
Permanent flow rate Q_3 (m ³ /h)	40	40	40	50	63	100	250	400	1000	1000										
Max flow rate for short period Q_4 (m ³ /h)	65	65	65	80	100	150	320	510	1250	1250										
Transitional flow rate Q_2 [MPE ±2%] (m ³ /h)	0,125	0,125	0,125	0,15	0,2	0,32	0,6	1	3,2	3,2										
Min flow rate Q_1 [MPE ±5%] (m ³ /h)	0,06	0,06	0,06	0,07	0,08	0,1	0,4	0,8	2	2										
Starting flow (m ³ /h)	0,025	0,025	0,025	0,025	0,025	0,025	0,2	0,2	0,5	0,5										
Measuring range R	500																			
Max working pressure MAP (bar)	16																			
Environmental protection	Classe C (-25°C...+55°C)																			
Electromagnetic environment	Classe E1																			
L) Length with couplings (mm)	460										-									
L) Length without couplings (mm)	300	300	200	200	225	250	300	350	449	499										
H) Height (mm)	155	155	194	210	210	223	282	332	383	456										
h) Height (mm)	35	35	40	90	90	103	140	165	203	245										
B) Max diameter (mm)	113	113	165	185	200	220	285	340	406	489										

¹ threaded DN 50, with couplings for pipes DN 40

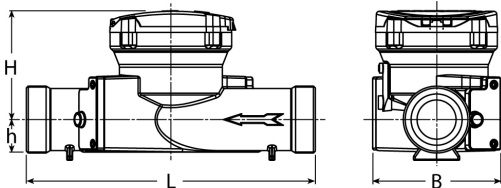
Display



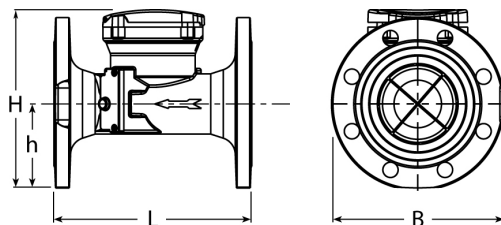
Version available, to specify when ordering

- Pre-set for analogic output 4-20mA reverse or alternate/net flow
- Pre-set for digital output open collector, battery powered, (K1/10, K10/100, K100/1000 and forward, reverse or alternate/net flow)
- Pre-set for digital output dry contact powered by 12-24 Vdc (K1/10, K10/100, K100/1000 and forward, reverse or alternate/net flow)

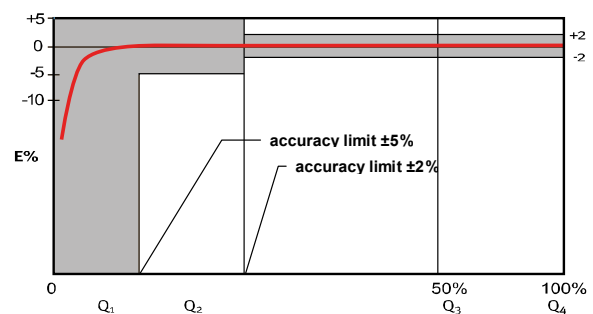
Threaded version



Flanged version



Typical accuracy curve



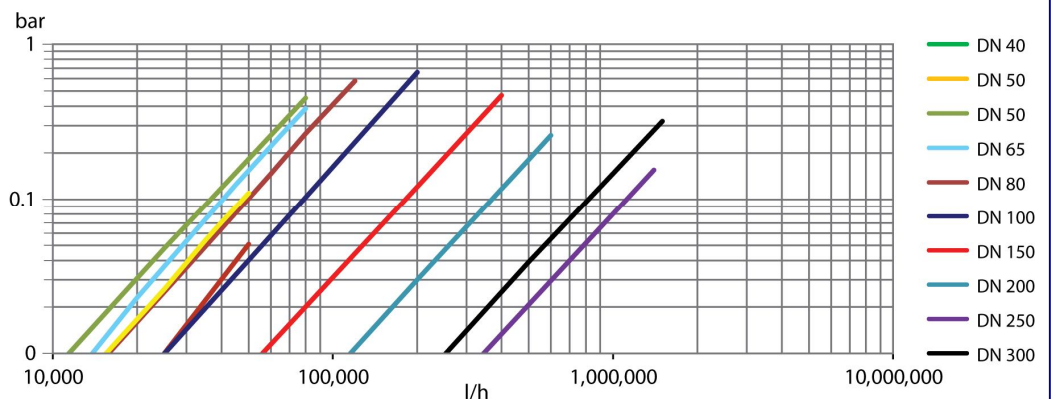
GPRS



SPECIAL APPLICATIONS

Using our concentrator CTS-AR and the relevant cable, with reading software, it is possible to distance transmit data directly on server

Head loss diagram



Continuous development of our products may necessitate changes without prior notice – 10/16



AZIENDA CON SISTEMA DI GESTIONE QUALITÀ CERTIFICATO DA DNV GL = ISO 9001 =

AZIENDA CON SISTEMA DI GESTIONE AMBIENTALE CERTIFICATO DA DNV GL = ISO 14001 =

Sede legale: Via San Martino, 38 – 14100 ASTI (AT) – ITALY – Tel. +39.0141.721787 – Fax +39.0141.702280 – E-mail: info@g2misuratori.it
 Filiale Centro-Sud: Via Fontanelle, 3 – 00020 RIOFREDDO (RM) – ITALY – Tel. e Fax +39.0774.920216 – E-mail: centrosud@g2misuratori.it

Website: www.g2misuratori.it