

REMOTE READING SYSTEM FOR WATER METERS EQUIPPED WITH **LoRaWAN™** INTERFACE RADIO MODULE WITH **LoRa** FOR WALK-BY/DRIVE-BY SYSTEMS

WALK-BY/DRIVE-BY RADIO SYSTEM

- Equipped with radio module Transmission of data from various meters installed in manholes, niches, flats, etc
- Radio communication interface with LoRa modulation on 868Mhz free frequency
- Dual communication
- Mobile data collection walk by/drive by a portable notebook on microUSB port via portable receiver antenna connected to Transmission distance about 50mt in manhole – about 1 km in open field, at the position of the person collecting data (distances may have excess or defective variations as well as natural obstacles, environmental conditions and electromagnetic pollution)
- Transmission data package including:
 - Instant consumption data
 - Historic reading of consumption per hour of previous 24 hours period
 - Low Battery

Possible alarms (general, fraud, reverse flow, low battery level,)

Leakage (loss report)

The same radio module can be used for fixed system of remote reading via LoRaWAN protocol transmission without field set up

LoRa



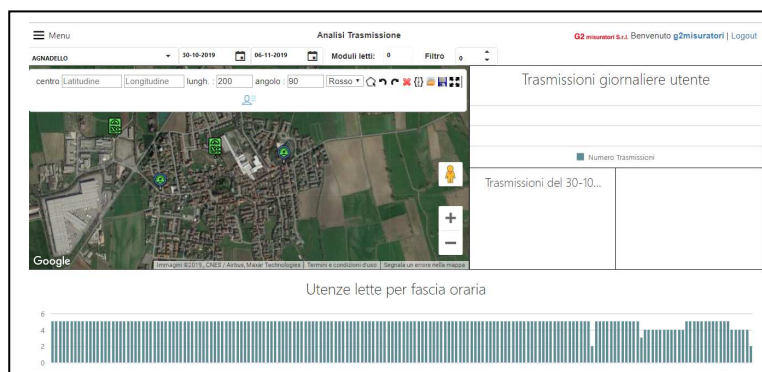
FIELD DATA DETECTION SOFTWARE

- Android 5.0 SO or higher via Cloud
- Data synchronizing directly from Cloud
- Detection of geographic coordinate with map support
- Navigator function to view reading shifts
- Alarm management and meter consumption
- Record of pictures, notes, meter location
- Functions of filter, reports and statistics



DATA MANAGEMENT PLATFORM

- Web interface accessible from any internet location with monitoring analysis, consultation and export of data collected during reading shifts operations synchronizing between back office operators and personell on the field
- Processing of reading shifts, user profiles, data reference
- Map representation of where the meter is located
- Analysis tools and statistical charts
- format Import/export tools compatible with the BILLING CRM
- Network analysis of the devices installed in the field
- It also supports infrastructure of fixed type with LoRaWAN communication protocol
- Cloud data storage at multiple level of security data and privacy data



L'Azienda si riserva di apportare modifiche ai dati tecnici e alle illustrazioni dei prodotti – 11/19