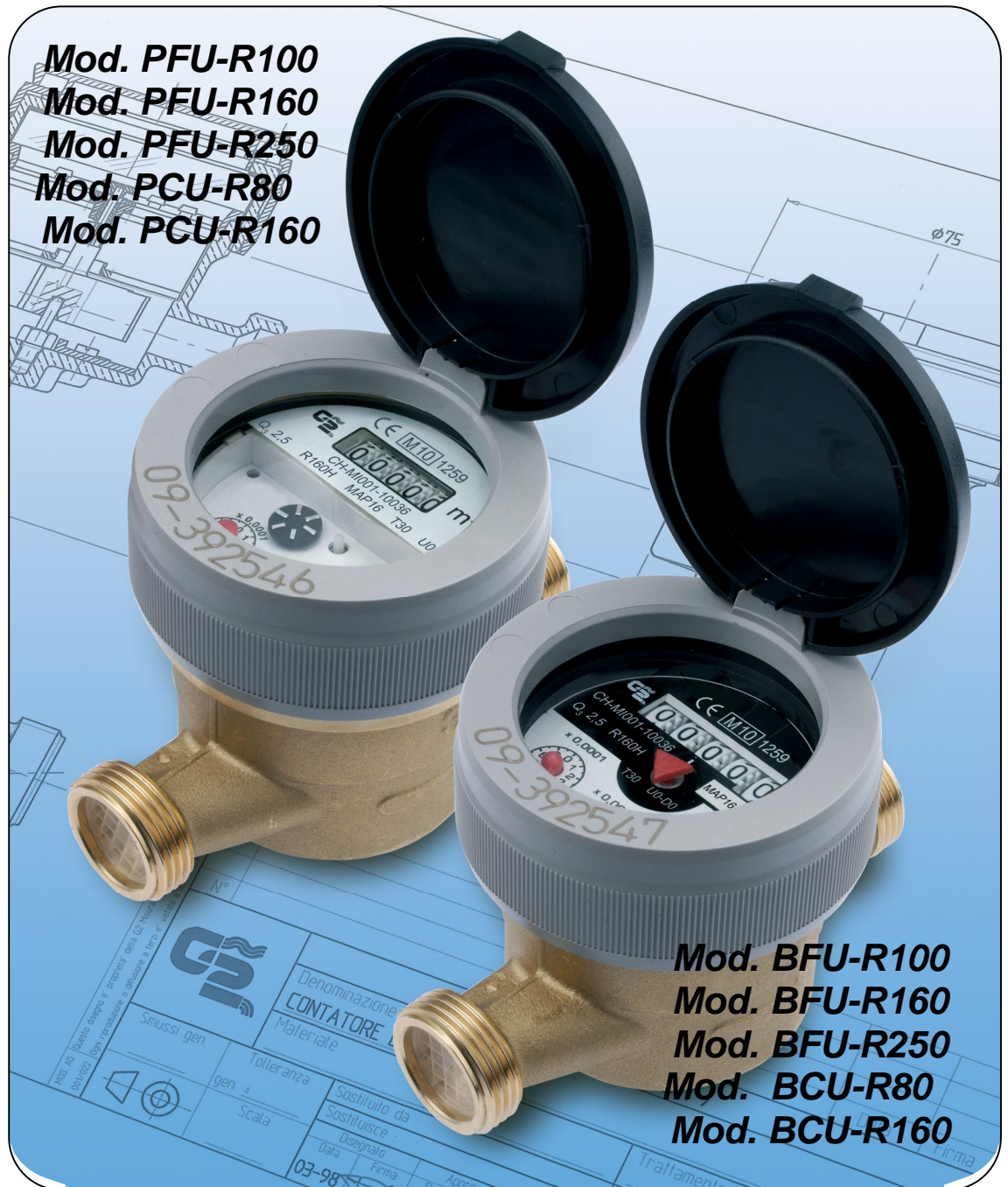


# G2 misuratori

THE VALUE OF METERING



 Made in ITALY



Mod. PFU-R100  
Mod. PFU-R160  
Mod. PFU-R250  
Mod. PCU-R80  
Mod. PCU-R160

Mod. BFU-R100  
Mod. BFU-R160  
Mod. BFU-R250  
Mod. BCU-R80  
Mod. BCU-R160

UNIV

- Single-jet meter, direct reading
- Mod. BFU-R100, WET DIAL, measuring range R100, temperature classes T30 and T50, for clean water
- Mod. BFU-R160, WET DIAL, measuring range R160, temperature classes T30 and T50, for clean water
- Mod. BFU-R250, WET DIAL, measuring range R160, temperature classes T30 and T50, for clean water
- Mod. BCU-R80, WET DIAL, measuring range R80, temperature classes T70 and T90, for clean water
- Mod. BCU-R160, WET DIAL, measuring range R160, temperature classes T70 and T90, for clean water
- Mod. PFU-R100, LIQUID FILLED SEALED counter, measuring range R100, temperature classes T30 and T50, for turbid water
- Mod. PFU-R160, LIQUID FILLED SEALED counter, measuring range R160, temperature classes T30 and T50, for turbid water
- Mod. PFU-R250, LIQUID FILLED SEALED counter, measuring range R160, temperature classes T30 and T50, for turbid water
- Mod. PCU-R80, LIQUID FILLED SEALED counter, measuring range R80, temperature classes T70 and T90, for turbid water
- Mod. PCU-R160, LIQUID FILLED SEALED counter, measuring range R160, temperature classes T70 and T90, for turbid water
- U0-D0: straight pipe not required upstream or downstream the meter
- All models can be customised with a **serial number and its relevant barcode indelibly engraved on the dial**
- All models are **MID** approved according to the current European Directive (module B+D) and in compliance with the norms **EN 14154** and **OIML R49**, reaching an **R (Q<sub>3</sub>/Q<sub>1</sub>) ≤ 250 H - ≤ 100 V**
- All models are certified for use with water for human consumption, according to the **D.M. 174** of 6/4/ 2004 and for PFU model, **ACS** certification according to norm DGS/SD7A n. 571 du 2002.
- All models, on request, can be supplied pulsed output or **preset for remote reading**

Wet dial model

**Temperature classes T30 & T50**

**BFU-R100 DN** 15 / 20 / 25  
32 / 40

**BFU-R160 DN** 15 / 20 / 25  
32 / 40

**BFU-R250 DN** 15 / 20

**BFU-R200 DN** 25 / 32 / 40

**Temperature classes T70 & T90**

**BCU-R80 DN** 15 / 20 / 25  
32 / 40

**BCU-R160 DN** 15 / 20

**Liquid filled sealed counter type**

**Temperature classes T30 & T50**

**PFU-R100 DN** 15 / 20 / 25  
32 / 40

**PFU-R160 DN** 15 / 20 / 25  
32 / 40

**PFU-R250 DN** 15 / 20

**PFU-R200 DN** 25 / 32 / 40

**Temperature classes T70 & T90**

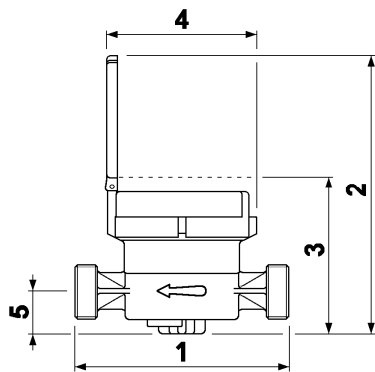
**PCU-R80 DN** 15 / 20 / 25  
32 / 40

**PCU-R160 DN** 15 / 20

**Different R available upon request  
(from R10 to R250)**

**Technical data- DN in mm-inches**

	15-1/2	20-3/4	25-1	32-1.1/4	40-1.1/2
<b>Permanent Flow Rate Q<sub>3</sub> (m<sup>3</sup>/h)</b>	2,5	4,0	6,3	10	16
Max. flow rate for short period Q <sub>4</sub> (m <sup>3</sup> /h)	3,125	5,0	7,875	12,5	20
Transitional flow rate Q <sub>2</sub> at measuring range R100 [MPE ±2%] (l/h)	40	64	100,8	100	256
Min flow rate Q <sub>1</sub> with measuring range R100 [MPE ±5%] (l/h)	25	40	63	125	160
Transitional flow rate Q <sub>2</sub> at measuring range R160 [MPE ±2%] (l/h)	25	40	63	100	160
Min. flow rate Q <sub>1</sub> with measuring range R160 [MPE ±5%] (l/h)	15,63	25	39,38	62,5	100
Starting flow at measuring range R100 (l/h)	10	15	20	20	25
Starting flow at measuring range R160 (l/h)	3,5	5	8	13	18
Accuracy class	2				
Environmental class	C (-25°C +55°C...+70°C)				
Pressure loss class ΔP (bar)	0,63				
Max allowed working pressure MAP (bar)	16				
Dial register from /to (m <sup>3</sup> )	0,0001 / 100,000				
1) Length without couplings (mm)	110-115	130	160	160	200
Length with couplings (mm)	190-195	228	260	280	340
2) Height with open lid (mm)	150	150	185	185	200
3) Height with closet lid (mm)	83	83	103	103	120
4) Max diameter (mm)	80	80	100	100	110
5) Height of tube (mm)	24	24	34	34	42
Weight with couplings (kg)	0,850	1,100	1,750	2,000	3,460
Weight without couplings (kg)	0,690	0,860	1,280	1,330	2,420



The following options are available upon request:

- Red painted body
- Models preset or fitted with static sensor
- Models preset or fitted with static sensor
- Models fitted with radio module
- DN 15 L.115 7/8" x 3/4" threads

Continuous development of our products may necessitate changes in details without prior notice - 04/18

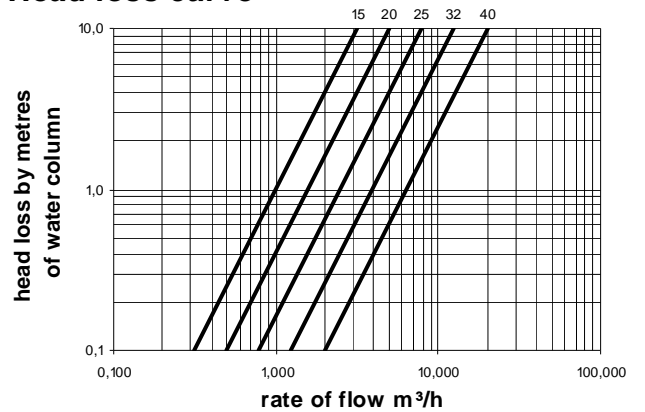


**G2 misuratori S.r.l. -**  
Via San Martino, 38 – 14100 ASTI (AT) – ITALY  
Tel. +39.0141.721787 – Fax +39.0141.702280  
E-mail: info@g2misuratori.it  
Http://www.g2misuratori.it

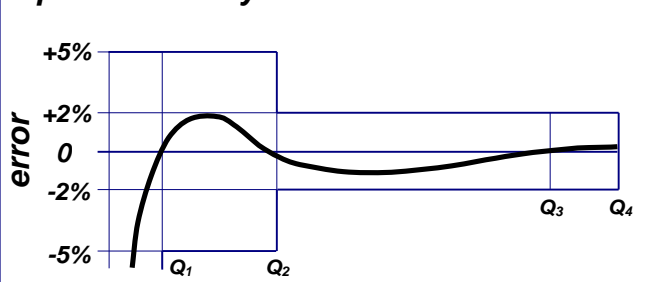


**Branch office for Italy Centre Sud Area**  
Via Fontanelle, 3 – 00020 RIOFREDDO (RM) – ITALY  
Tel. e Fax +39.0774.920216  
E-mail: centrosud@g2misuratori.it

**Head loss curve**



**Typical accuracy curve**



COMPANY WITH  
QUALITY SYSTEM  
CERTIFIED BY DNV GL  
= ISO 9001 =

COMPANY WITH  
ENVIRONMENTAL SYSTEM  
CERTIFIED BY DNV GL  
= ISO 14001 =