



 Made in ITALY



- ❑ Single-jet meter, direct reading, temperature classes T30 and T50
- ❑ Mod. QDFUPI-R250H-R160V, DN 15 – 20, **preset K=1 for inductive sensor IPS proof from magnetic interferences**, LIQUID FILLED SEALED counter, **FULLY PROTECTED DRY dial**, mechanical transmission, measuring range R250H-R160V, for turbid water
- ❑ Mod. QDFUPI-R200H-R100V, DN 25 – 32 – 40, **preset K=1 for inductive sensor IPS proof from magnetic interferences**, LIQUID FILLED SEALED counter, **FULLY PROTECTED DRY dial**, mechanical transmission, measuring range R200H-R100V, for turbid water
- ❑ Mod. QDFU-R250H-R160V, DN 15 – 20, LIQUID FILLED SEALED counter, **FULLY PROTECTED DRY dial**, mechanical transmission, measuring range R250H-R160V, for turbid water
- ❑ Mod. QDFU-R200H-R100V, DN 25 – 32 – 40, LIQUID FILLED SEALED counter, **FULLY PROTECTED DRY dial**, mechanical transmission, measuring range R160H-R100V, for turbid water
- ❑ U0-D0: straight pipe not required upstream or downstream the meter
- ❑ All models can be customised with a **serial number and its relevant barcode indelibly engraved on the dial**
- ❑ All models are **MID** approved according to the current European Directive (module B+D) and in compliance with the norms **EN 14154** and **OIML R49**
- ❑ All models are certified for use with water for human consumption, according to the **D.M. 174** of 6/4/ 2004 as well as **ACS** according to norm DGS/SD7A n. 571 du 2002
- ❑ All models, on request, can be supplied pulsed output

UNI

**Liquid filled sealed counter,
fully protected dry dial**

Temperature classes T30 & T50

QDFUPI-R250H-R160V DN 15/20

QDFU-R250H-R160V DN 15/20

QDFUPI-R200H-R100V DN 25/32/40

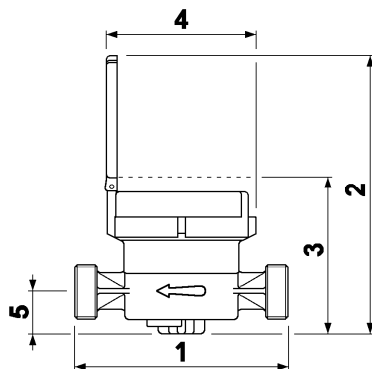
QDFU-R200H-R100V DN 25/32/40



Inductive sensor IPS

Technical data- DN in mm-inches

	15-1/2	20-3/4	25-1	32-1.1/4	40-1.1/2
Permanent Flow Rate Q_3 (m³/h)	2,5	4,0	6,3	10	16
Max. flow rate for short period Q_4 (m³/h)	3,125	5,0	7,875	12,5	20
Transitional flow rate Q_2 at measuring range R200 [MPE $\pm 2\%$] (l/h)	20	32	-	-	-
Min flow rate Q_1 with measuring range R200 [MPE $\pm 5\%$] (l/h)	12,5	20	-	-	-
Transitional flow rate Q_2 at measuring range R160 [MPE $\pm 2\%$] (l/h)	-	-	63	100	160
Min. flow rate Q_1 with measuring range R160 [MPE $\pm 5\%$] (l/h)	-	-	39,38	62,5	100
Starting flow at measuring range R200 (l/h)	3,5	5	-	-	-
Starting flow at measuring range R160 (l/h)	-	-	8	13	18
Accuracy class	2				
Environmental class	C(-25°C +55°C...+70°C)				
Pressure loss class ΔP (bar)	0,63				
Max allowed working pressure MAP (bar)	16				
Dial register from /to (m³)	0,0001 / 100,000				
1) Length without couplings (mm)	110-115	130	160	160	200
Length with couplings (mm)	190-195	228	260	280	340
2) Height with open lid (mm)	150	150	185	185	200
3) Height with closet lid (mm)	83	83	103	103	120
4) Max diameter (mm)	80	80	100	100	110
5) Height of tube (mm)	24	24	34	34	42
Weight with couplings (kg)	0,850	1,100	1,750	2,000	3,460
Weight without couplings (kg)	0,690	0,860	1,280	1,330	2,420



The following options are available upon request:

- ☐ Models preset or fitted with single or double reed for pulse readout system
- ☐ Models preset or fitted with static sensor
- ☐ Models fitted with radio module

Continuous development of our products may necessitate changes in details without prior notice - 04/18

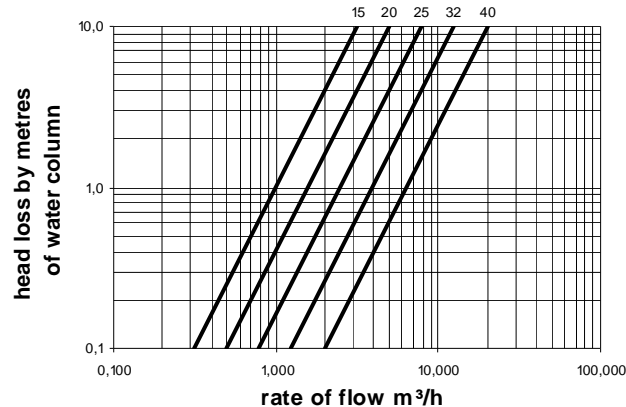


G2 misuratori S.r.l. -
Via San Martino, 38 – 14100 ASTI (AT) – ITALY
Tel. +39.0141.721787 – Fax +39.0141.702280
E-mail: info@g2misuratori.it
[Http://www.g2misuratori.it](http://www.g2misuratori.it)

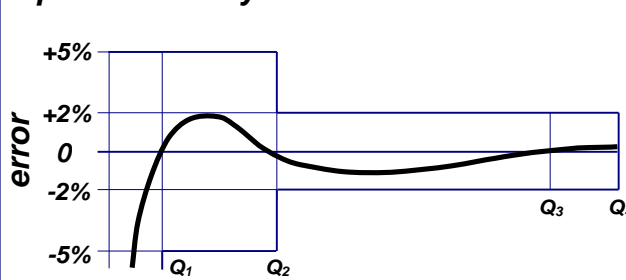


Branch office for Italy Centre Sud Area
Via Fontanelle, 3 – 00020 RIOFREDDO (RM) – ITALY
Tel. e Fax +39.0774.920216
E-mail: centrosud@g2misuratori.it

Head loss curve



Typical accuracy curve



COMPANY WITH
QUALITY SYSTEM
CERTIFIED BY DNV GL
= ISO 9001 =

COMPANY WITH
ENVIRONMENTAL SYSTEM
CERTIFIED BY DNV GL
= ISO 14001 =