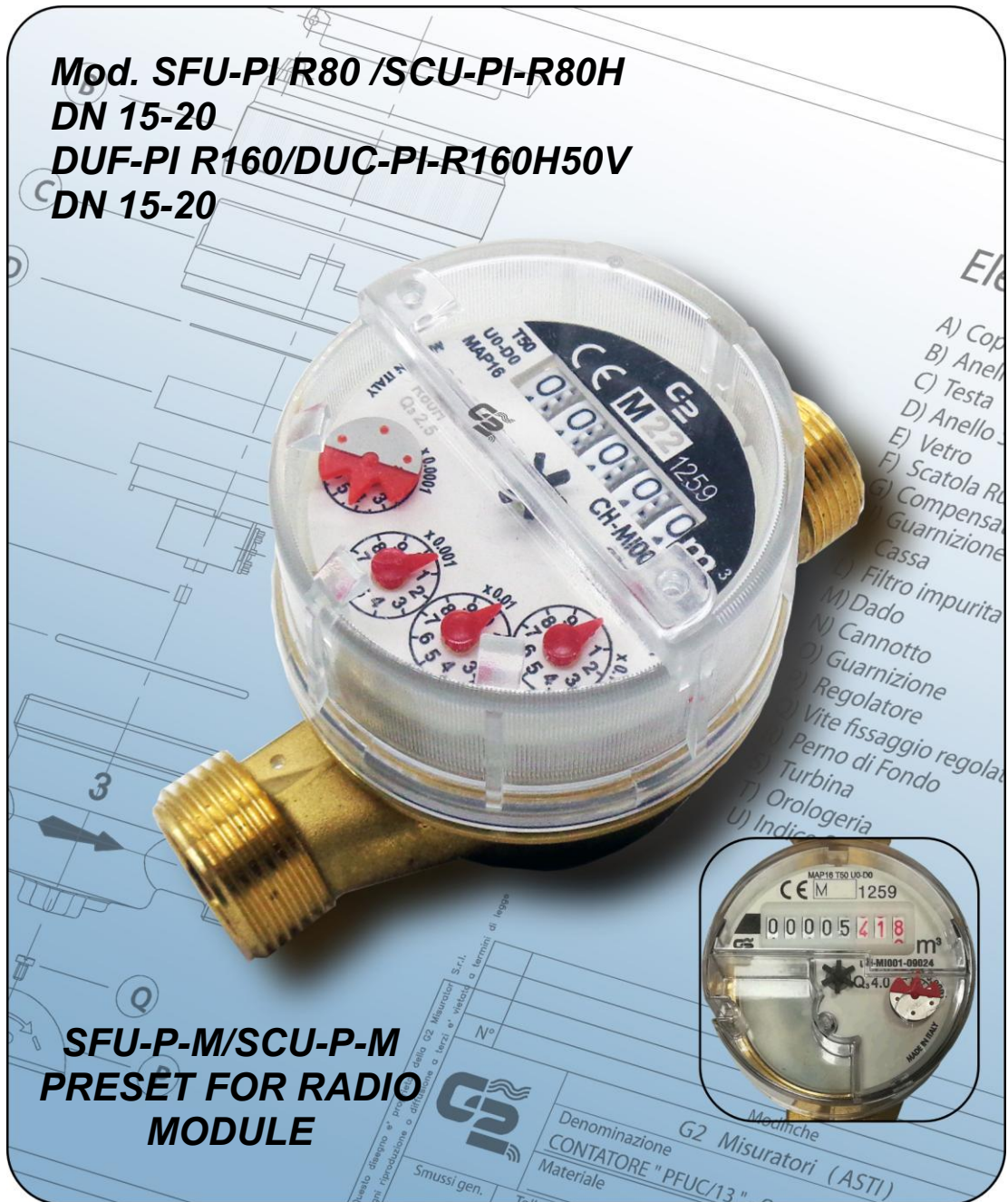




Made in ITALY

Mod. SFU-PI R80 /SCU-PI-R80H
DN 15-20
DUF-PI R160/DUC-PI-R160H50V
DN 15-20



SFU-P-M/SCU-P-M
PRESET FOR RADIO
MODULE



UNIV

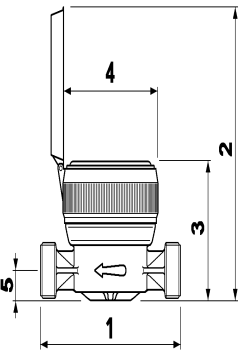
- Single jet, dry dial
- Presetting for not-magnetic inductive sensor IPS K=1-DRY dial**, for turbid and greatly calcareous water, magnetic transmission.
- Mod. SFU-PI R80, DN 15 – 20, temperature classes T30 and T50, measuring range R80H
- Mod. SCU-PI R80, DN 15 – 20, temperature classes T70 and T90, measuring range R80H
- Mod. DUF-PI R160, DN 15-20 , temperature classes T30 and T50, measuring range R160H50V
- Mod. DUC-PI R160, DN 15-20, temperature classes T70 and T90, measuring range R160H50V
- 360° rotating dial. On request, available with or without lid, with or without glass wiping
- U0-D0: straight pipe not required upstream or downstream the meter
- All models can be customised with **its serial number and its relevant barcode permanently engraved on the dial**
- All models are **MID** approved according to current European Directive (module B+D) and in compliance with the norms **EN 14154** and **OIML R49**, reaching an **R (Q₃/Q₁) ≤ 160**
- All models are certified for use with water for human consumption, according to the **D.M 174** of 6 april 2004 in compliance with European Directive 98/83 CE (Drinking Water Directive)
- All models, on request, can be supplied fitted with pulse output or only **preset for remote reading**

Dry dial
Temperature classes T30 & T50
SFU/ DN 15 / 20
DUF/ DN 15/20

Dry dial
Temperature classes T70 e T90
SCU/ DN 15 / 20
DUC/ DN 15/20

Technical data- DN in mm-inches

	15-1/2"	20-3/4"
Permanent flow rate Q_3 (m ³ /h)	2,5	4,0
Max. flow rate for short period Q_4 (m ³ /h)	3,125	5,0
Transitional flow rate Q_2 at measuring range R80H [MPE $\pm 2\%$] (l/h)	50	80
Minimum flow rate Q_1 at measuring range R80H [MPE $\pm 5\%$] (l/h)	31,25	50
Transitional flow rate Q_2 at measuring range R160H [MPE $\pm 2\%$] (l/h)	25	-
Minimum flow rate Q_1 at measuring range R160H [MPE $\pm 5\%$] (l/h)	15,625	-
Starting flow with measuring range R80H (l/h)	6	11
Accuracy class	2	2
Pressure loss class ΔP (bar)	0,63	0,63
Max. allowed working pressure MAP (bar)	16	16
Dial register from/to (m ³)	0,0001 / 100,000	0,0001 / 100,000
1) Length without couplings (mm)	110-80 115-170	130
Length with couplings (mm)	190-160 195-250	228
2) Height with open lid (mm)	138	143
3) Height with closed lid (mm)	70	74
4) Max. diameter (mm)	72	72
5) Height of tube (mm)	16	19
Weight with couplings (kg)	0,660	0,840
Weight without couplings (mm)	0,500	0,600



Inductive sensor IPS
 (suitable for SFU-PI/SCU-PI)

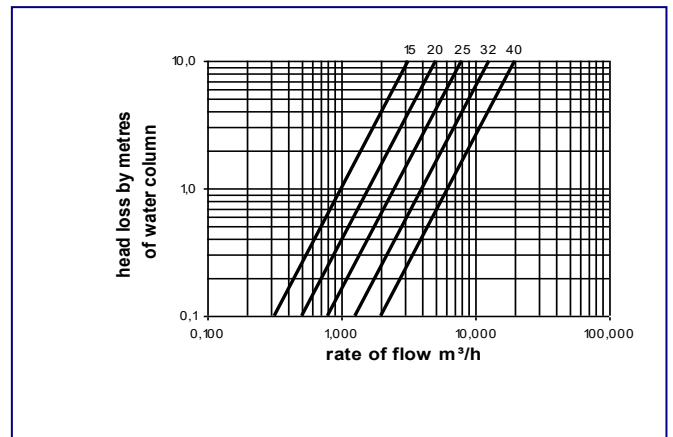


Model MBC: Wired M-Bus module
 (suitable for SFU-P-M/SCU-P-M)



Mod WMBR Wireless radio module M-Bus (OMS)
Mod. B-it RML Radio module LoraWan
 (suitable for SFU-P-M/SCU-P-M)

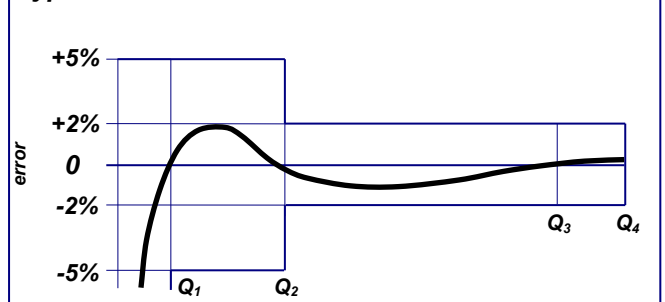
Head loss diagram



The following options are available on request:

- Complete with radio module operating at 868 MHz with combined LoRaWAN and W-Mbus OMS protocols and an automatic switch, NB-IoT with protocol MQTT*
- LoRaWAN protocol operating at 915 MHz
- Models SFU-P-M e SCU-P-M with provision for wired Mbus and for Wireless M-Bus (OMS) radio module
- Models SFU-MB and SCU-MB fitted with wired M-Bus module
- Models SFU-M-R-WMB and SCU-M-R-WMB fitted with Wireless M-Bus (OMS) radio module

Typical error curve



L'azienda si riserva di apportare modifiche a dati tecnici e alle illustrazioni dei prodotti -05/26



G2 misuratori S.r.l. -
Via San Martino, 38 – 14100 ASTI (AT) – ITALY
Tel. +39.0141.721787 – Fax +39.0141.702280
E-mail: info@g2misuratori.it
Http://www.g2misuratori.it



Ufficio Centro Sud
Via Fontanelle, 3 – 00020 RIOFREDDO
Città Metropolitana di Roma Capitale – ITALY
Tel. e Fax +39.0774.920216
E-mail: centrosud@g2misuratori.it



ISO 9001 - ISO 14001 - ISO 45001
 UNI/PdR 125:2022

