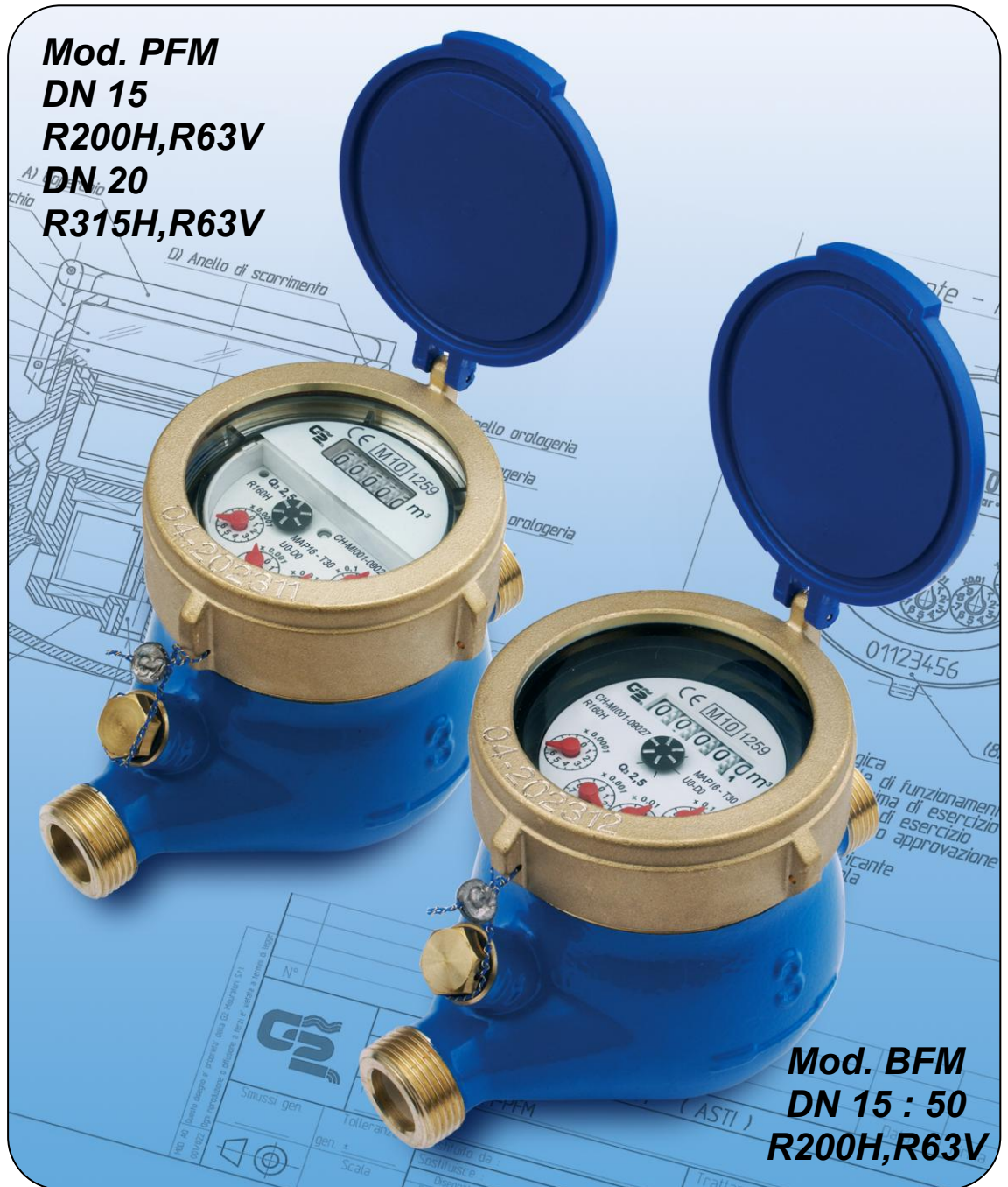


# G2 misuratori

THE VALUE OF METERING



Italy Made in ITALY



Mod. PFM  
DN 15  
R200H,R63V  
DN 20  
R315H,R63V

Mod. BFM  
DN 15 : 50  
R200H,R63V

MULTIPLY

- ❑ Multi-jet turbine straight reading meter
- ❑ Mod. BFM, DN 15-20-25-32-40-50, WET dial, measuring range R200H,R63V, temperature classes T30 and T50, for clean water
- ❑ Mod. PFM, DN 15-20, LIQUID FILLED SEALED counter, measuring range R200H,R63V, temperature classes T30 and T50, for turbid water
- ❑ U0-D0: straight pipe not required upstream or downstream the meter
- ❑ All models are **MID** approved according to the current European Directive (module B+D) and in compliance with the norms **EN 14154**, **ISO 4064** and **OIML R49**, reaching an R ( $Q_3/Q_1$ )  $\leq 315H/63V$
- ❑ All models are certified for use with water for human consumption, according to the **D.M. 174** of 6/4/ 2004 in compliance with European Directive 98/83 CE (Drinking Water Directive)

# MULTY

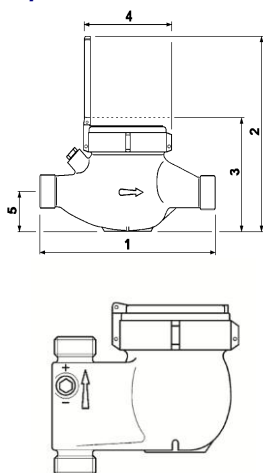


## Wet dial model

Temperature classes T30 & T50  
 BFM- DN 15 / 20 / 25 / 32 / 40 / 50  
 R from 40H to 315H  
 R from 40V to 63V  
 to be specified when ordering

## Liquid-filled sealed counter model

Temperature classes T30 & T50  
 PFM- DN 15 / 20  
 R from 40H to 315H  
 R from 40V to 63V  
 to be specified when ordering



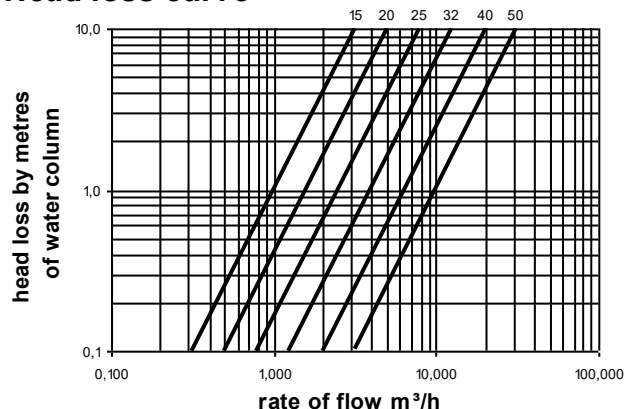
## Technical data- DN in mm- inches

	15-1/2	20-3/4	25-1	32-1.1/4	40-1.1/2	50-2
Permanent Flow Rate Q <sub>3</sub> (m <sup>3</sup> /h)	2,5	4,0	6,3	10	16	25
Max. flow rate for short period Q <sub>4</sub> (m <sup>3</sup> /h)	3,125	5,0	7,875	12,5	20	31,250
Transitional flow rate Q <sub>2</sub> at measuring range R200H [MPE ±2%] (l/h)	20	32	50,40	80	128	200
Min. flow rate Q <sub>1</sub> with measuring range R200H [MPE ±5%] (l/h)	12,5	20	31,5	50	80	125
Starting flow at measuring range R200H (l/h)	3	5	8	8	15	18
Accuracy class	2					
Environmental class	C (-25°C +55°C)					
Pressure loss class ΔP (bar)	0,63					
Max allowed working pressure MAP (bar)	16					
Dial register from /to (m <sup>3</sup> )	0,0001 / 100.000			0,0001 / 100.000 o 1.000.000		
1) Length without couplings (mm)	110-115-130 145-165-170 190	130-160-165 190	160-220-260	160-220-260	300	300
Length with couplings (mm)	190-195-210 225-245-250 270	260-265 290	320-360	320-360	440	460
2) Height with open lid (mm)	185	185	200	200	210	220
3) Height with closet lid (mm)	105	105	120	120	130	140
4) Max. diameter (mm)	96	96	100	100	136	136
5) Height of tube (mm)	35	35	40	40	60	70
Weight with couplings (kg)	1,650	1,800	3,200	3,500	6,100	9,700
Weight without couplings (kg)	1,500	1,550	2,750	2,800	5,100	7,400

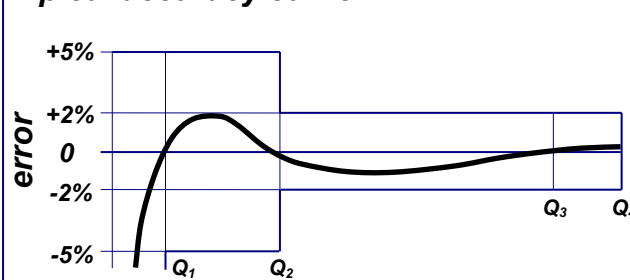
The following options are available upon request:

- Mod. BFM DN 15 high pressure version (40 bar)
- MAP 25 bar MID approved model
- Curved plexiglass glass, to ease distance reading
- Non- return valve fitted on the outlet nipple
- Red painted body
- serial number and its relevant barcode indelibly engraved on the dial
- Vertical riser body for vertical installation
- Models preset or fitted with reed for pulse readout system
- Models preset or fitted with static sensor
- Models fitted with radio module operating at 868 MHz with combined LoRaWAN and W-Mbus OMS protocols and an automatic switch and radio module operating with NB-Iot MQTT protocol
- Models operating at 915Mhz LoRaWAN protocol

## Head loss curve



## Typical accuracy curve



Continuous development of our products may necessitate changes in details without prior notice -04.26



G2 misuratori S.r.l. -  
 Via San Martino, 38 – 14100 ASTI (AT) – ITALY  
 Tel. +39.0141.721787 – Fax +39.0141.702280  
 E-mail: info@g2misuratori.it  
 Http://www.g2misuratori.it



Branch office for Italy Centre Sud Area  
 Via Fontanelle, 3 – 00020 RIOFREDDO (RM) – ITALY  
 Tel. e Fax +39.0774.920216  
 E-mail: centrosud@g2misuratori.it



ISO 9001 - ISO 14001 - ISO 45001  
 UNI/PdR 125:2022

