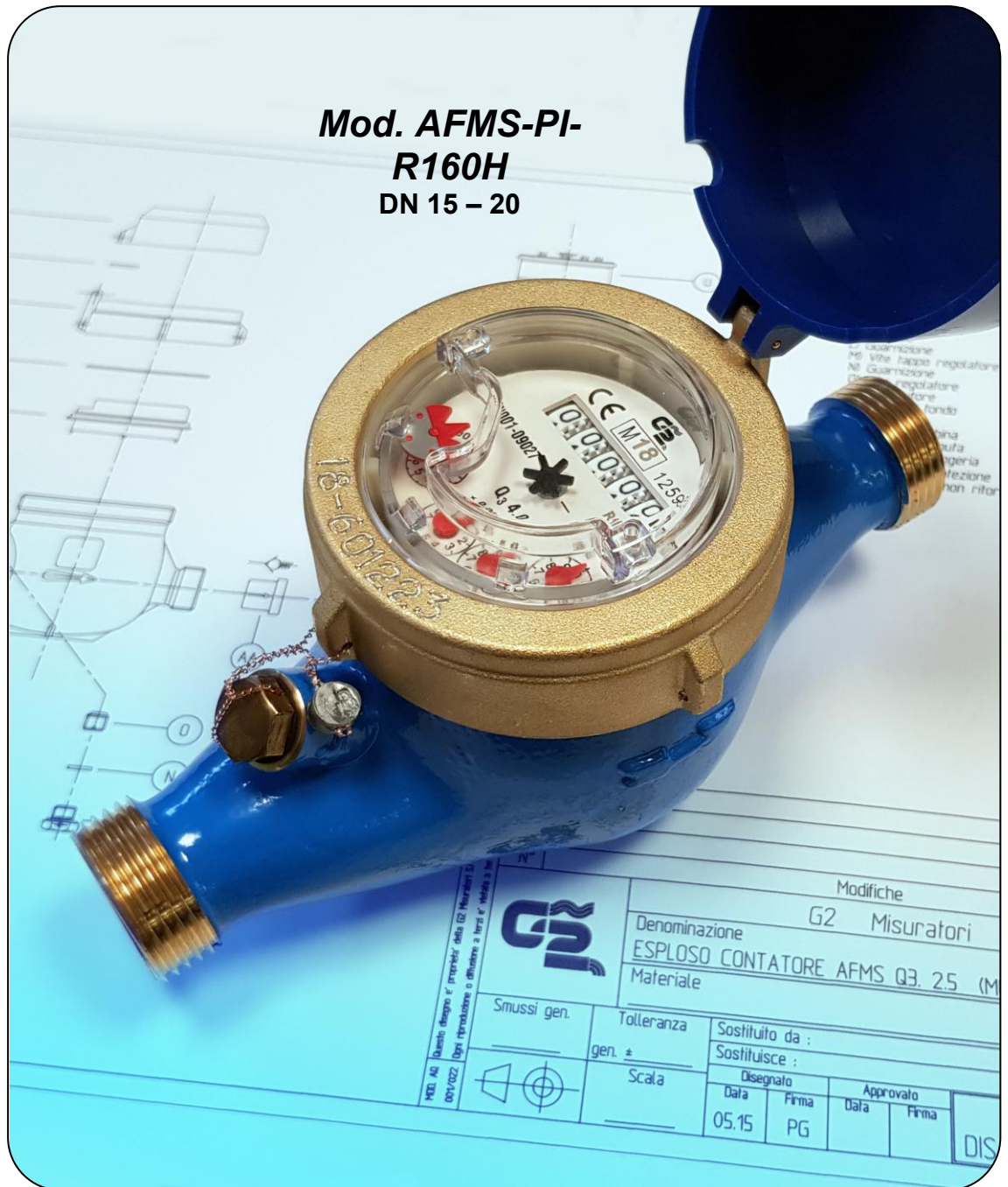




 Made in ITALY



Mod. AFMS-PI-
R160H
DN 15 – 20

MULTI

- ❑ Mod. AFMS-PI-R160H, SUPER-DRY 360° rotating dial, measuring range R160H, environmental class C, for turbid and calcareous water, **preset K=1 for inductive sensor IPS**
- ❑ All models are **MID** approved according to the current European Directive (module B+D) and in compliance with the norms **EN 14154**, **ISO 4064** and **OIML R49**, reaching an **R (Q₃/Q₁) ≤200H**
- ❑ Multi-jet turbine straight reading meter, temperature classes T30 and T50
- ❑ U0-D0: straight pipe not required upstream or downstream the meter
- ❑ All models can be customised with a **serial number and its relevant barcode indelibly engraved on the dial**
- ❑ All models are certified for use with water for human consumption, according to the **D.M. 174** of 6/4/ 2004 in compliance with with European Directive 98/83 CE (Drinking Water Directive)

MULTY

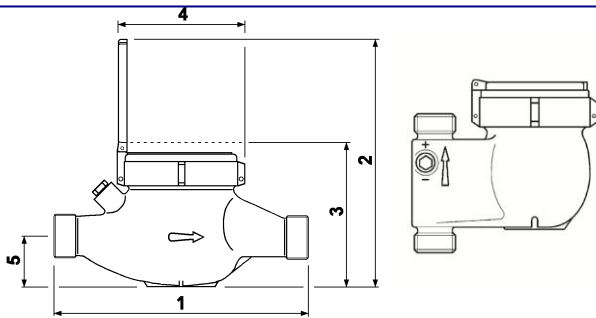


**Dry dial model
Temperature
classes T30 & T50
AFMS-PI DN
15/20
R from R40H to
R200H
R from R40V to
R50V
to be specified
when ordering**



**Inductive sensor
IPS**

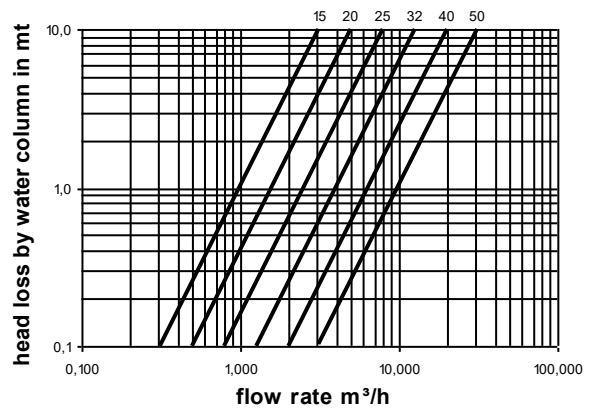
Technical Data – DN in mm-inches	15-1/2	20-3/4
Permanent Flow Rate Q_3 (m ³ /h)	2,5	4,0
Max. flow rate for short period Q_4 (m ³ /h)	3,125	5,0
Transitional flow rate Q_2 at measuring range R160H [MPE $\pm 2\%$] (l/h)	25	40
Min flow rate Q_1 with measuring range R160H [MPE $\pm 5\%$] (l/h)	15,63	25
Starting flow at measuring range R 160H (l/h)	3	5
Accuracy class	2	2
Environmental Class	C(-25°C +55°C)	
Pressure loss class ΔP	0,63	0,63
Max allowed working pressure MAP (bar)	16	16
Dial register from/to (m ³)	0,0001/100.000	0,0001/100.000
1) Length without couplings (mm)	110-115-130 145-165-170 190	130-160-165 190
Length with couplings (mm)	190-195-210 225-245-250 270	260-265 290
2) Height with open lid (mm)	195	195
3) Height with closet lid (mm)	115	115
4) Max. diameter (mm)	96	96
5) Height of tube (mm)	35	35
Weight with couplings (kg)	1,650	1,800
Weight without couplings (kg)	1,500	1,550



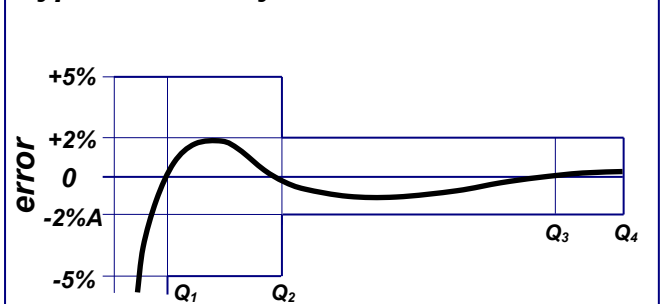
The following options are available upon request:

- Non- return valve fitted on the outlet nipple
- Models without presetting
- Models with mineral glass
- Vertical riser body for vertical installation
- Models preset or fitted with reed for pulse readout system
- Models fitted with static sensor
- Models fitted with radio module, frequency 868Mhz and combined LoRaWAN and W-Mbus OMS protocols with automatic switch, NB-IoT MQTT protocol
- LoRaWAN protocol with 915mHz frequency

Head loss curve



Typical accuracy curve



Continuous development of our products may necessitate changes in details without prior notice— 04/26



G2 misuratori S.r.l. -
Via San Martino, 38 – 14100 ASTI (AT) – ITALY
Tel. +39.0141.721787 – Fax +39.0141.702280
E-mail: info@g2misuratori.it
[Http://www.g2misuratori.it](http://www.g2misuratori.it)

Filiale Centro-Sud
Via Fontanelle, 3 – 00020 RIOFREDDO (RM) – ITALY
Tel. e Fax +39.0774.920216
E-mail: centrosud@g2misuratori.it



ISO 9001 - ISO 14001 - ISO 45001
UNI/PdR 125:2022

