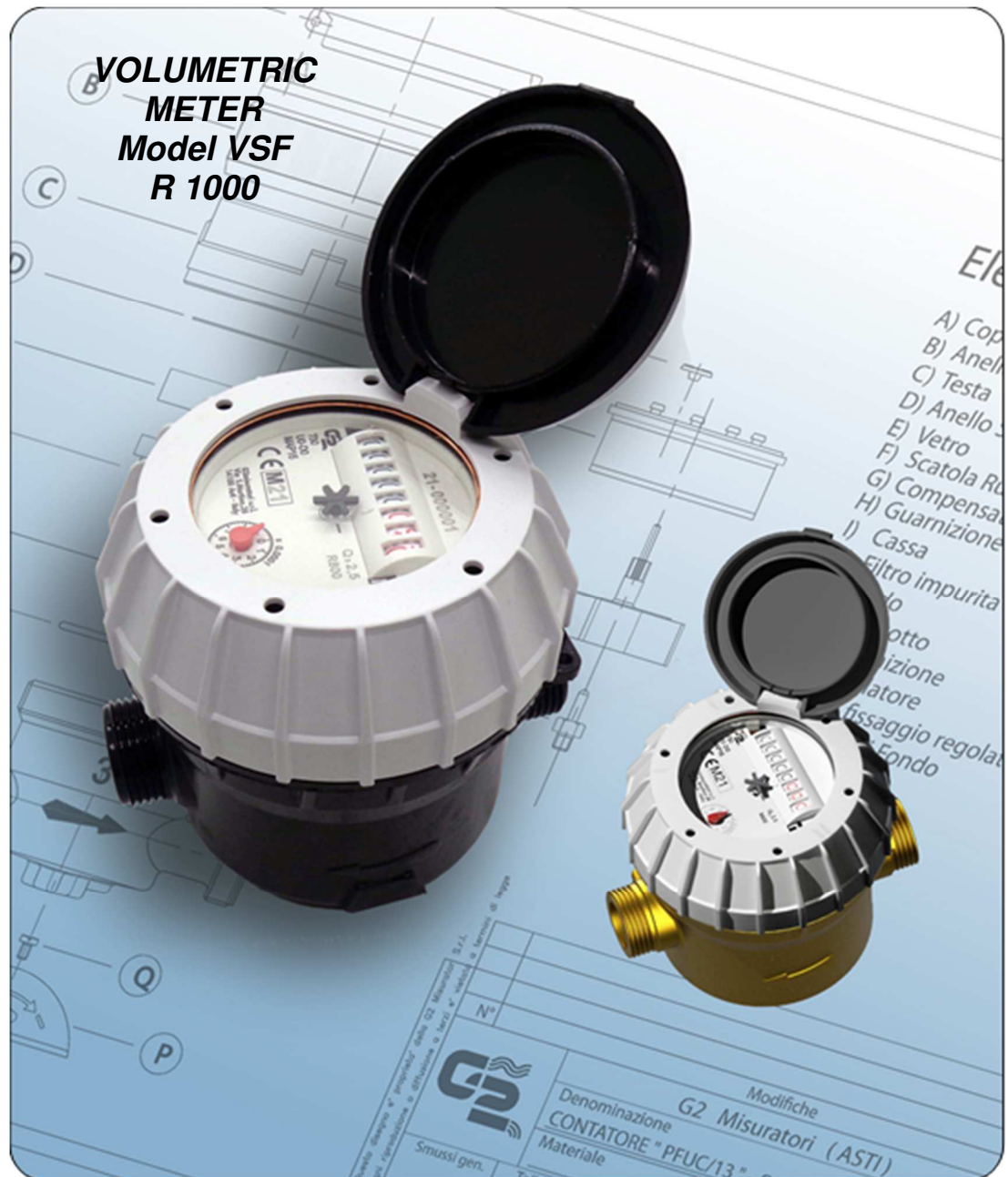




# VOLUMETER



- ❑ VOLUMETRIC COUNTER, **rotating piston**, 8-digit-rolls direct reading on 360° rotating dial, preset for inductive sensor  $k=1$
- ❑ mineral glass and copper can housing- IP68
- ❑ **Newly developed** mod. VSF DN 15, dry dial, for clean water, temperature class T50, ensuring:
  - Maximum quietness ( $< 20\text{dB}$ )
  - Reduced overall dimensions
  - Filter system for high resistance of suspended particles
- ❑ All models are MID approved according to the current Directive (module B+D), in compliance with **UNI EN ISO 4064** and **OIML R49**, achieving an R (Q3/Q1) up to 1000
- ❑ U0-D0: no straight pipe sections are required upstream and downstream of the meter
- ❑ All models are certified for use with drinking water according to **D.M. 174** of 6 April 2004

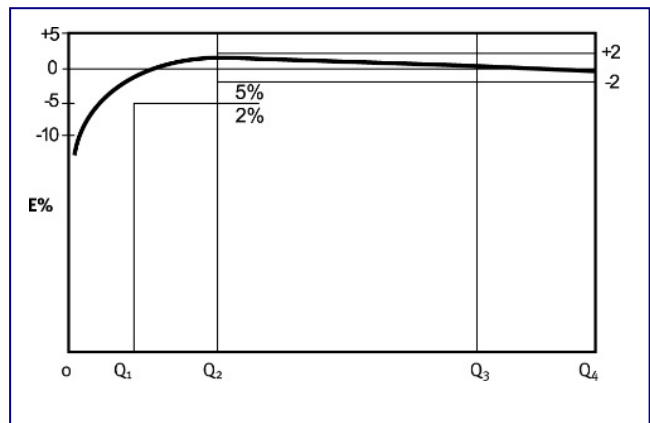
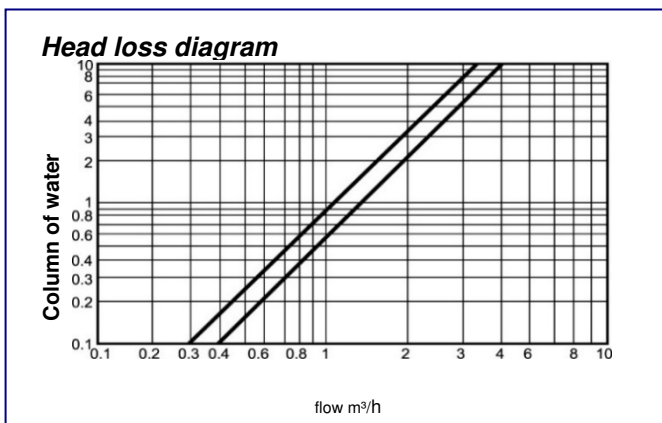
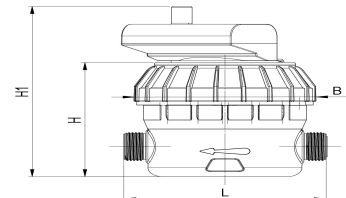
# VOLUMETER

## Technical Data – DN-inches

	15	20
<b>Continuous flow rate Q3 (m<sup>3</sup>/h)</b>	<b>2,5</b>	<b>4</b>
Max. flow rate for short period Q4 (m <sup>3</sup> /h)	3,125	5
Transitional flow rate Q <sub>2</sub> (l/h)	8	12,8
Minimum Flow rate Q <sub>1</sub> (l/h)	5	8
<b>Mesuring range R (other R's available on request)</b>	<b>500HV</b>	<b>500HV</b>
Starting flow (l/h)	0,5	0,5
Pressure loss class ΔP (bar)	0,63	0,63
<b>Body material</b>	<b>Composite/Brass</b>	<b>Brass</b>
Working environmental temperature	-25° +55°C	
Max. allowed working pressure MAP (bar)	16	16
Dial register from/to (m <sup>3</sup> )	0,0001 / 100.000	0,0001 / 100.000
L) Length without couplings (mm) <b>(other lengths available on request)</b>	110	190
Length with couplings (mm)	190	290
H) Maximum height standard model (mm)	105	130
H1) Maximum height with pulse output (mm)	150	170
B) Maximum overall diameter (mm)	98,5	90
Weight with couplings (kg)	0,69	1.8
Weight without couplings (kg)	0,49	1.5

The following options are available on request:

- Models complete with data transmission via radio frequency 868Mhz with LoRaWAN, W-Mbus OMS or both with **automatic switch**, via NB-Iot with protocol MQTT\*
- On request LoRaWAN protocol with 915mhz frequency
- Non-return valve built-in in outlet pipe
- 5-digit-rolls counter
- Polycarbonate glass- IP68



The Company reserves the right to make changes to technical data and product illustrations – 04/26



**G2 misuratori S.r.l. -**  
**Via San Martino, 38 – 14100 ASTI (AT) – ITALY**  
**Tel. +39.0141.721787– Fax +39.0141.702280**  
**E-mail: info@g2misuratori.it**  
**Http://www.g2misuratori.it**



**Filiale Centro-Sud**  
**Via Fontanelle, 3 – 00020 RIOFREDDO**  
**Citta metropolitana di Roma Capitale – ITALY**  
**Tel. e Fax +39.0774.920216**  
**E-mail: centrosud@g2misuratori.it**

