



# ULTRASONIC

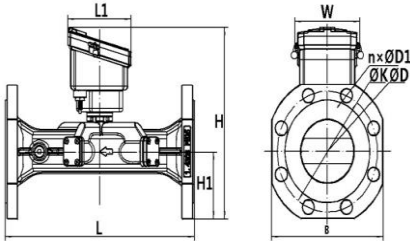


- Ultrasonic water meter.
- Mod. UDF with gauges from DN 50 to DN 200, temperature class T50, measuring range R500 with pulse output (see attached table).
- Very low start-up flow rate and 70% lower minimum flow rate than conventional meters.
- Temperature detection, fault indication and abnormal water consumption.
- No moving mechanical parts, very low wear and tear and very high durability.
- Liquid crystal display with IP68 protection rating and magnetic button.
- Certified according to Directive 2014/32/EU.
- Installation allowed in any position: in any case, the meter must always be filled with water in order to operate correctly.

# ULTRASONIC



**Modello UDF**  
**Temperature class T50**  
**DN50 / 65 / 80 / 100 / 125/200**  
**R 500**



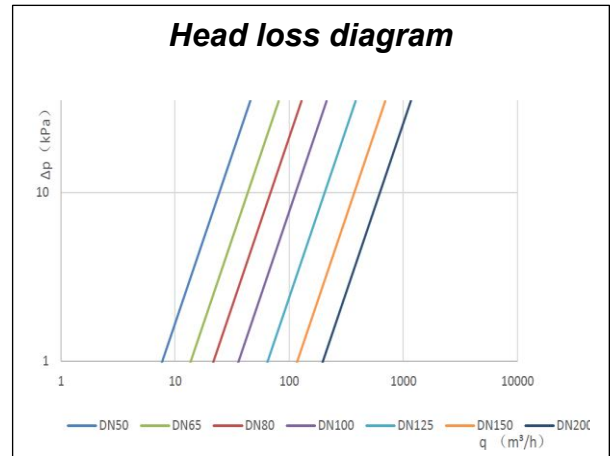
- The following options are available on request:
- \*DN 125 and DN 200: steel body (other versions have a cast iron body)
  - Complete RF radio module solution operating at 868Mhz with combined LoRaWAN and W-Mbus OMS protocols and an automatic switch, NB-IoT with protocol MQTT

Technical data – DN in mm	50	65	80	100	125*	150	200*
Permanent flow rate Q3 (m³/h)	25	40	63	100	160	250	400
Overload flow rate Q4 (m³/h)	31,25	50,00	78,75	125,00	200,00	312,50	500,00
Transitional flow rate Q2 (m³/h)	0,080	0,128	0,202	0,320	0,512	0,800	1,280
Minimum flow rate Q1 (m³/h)	0,050	0,080	0,126	0,200	0,320	0,500	0,800
Pressure drop	25	25	25	25	25	25	25
Measuring range R ( Q3 / Q1)	500	500	500	500	500	500	500
Pulse value	K10	K10	K10	K10	K100	K100	K100
Pulse duration (ms)	100	100	100	100	100	100	100
L) Length (mm)	200	200	225	250	250	300	350
L1	120	120	120	120	123	120	120
H) Height (mm)	245	250	275	290	380	400	470
H1) Distance between pipe and counter support surface (mm)	65	70	90	100	125	130	170
W	123	123	123	123	123	123	123
B) Maximum overall diameter (mm)	172	190	205	230	250	285	340
D	165	185	200	220	250	285	340
K	125	145	160	180	210	240	295
n x ØD1	4 x Ø18	4 x Ø18	8 x Ø18	8 x Ø18	8 x Ø18	8 x Ø22	8 x Ø22

## Hydraulic performance

Maximum reading m³/h	DN 50-DN 100	9999999.99999
	DN 125-DN 200	99999999.99999
1,6 MPa (1,0 MPa on demand)		
T50 (T30 on demand)		
U0-D0		
IP68 (IP65 by external power supply)		
3,6 V lithium battery (220 V ac, 24 V dc on request)		
13 years		
Class C (class B, class I on request)		
Class E1 (class E2)		
Water		
Any		

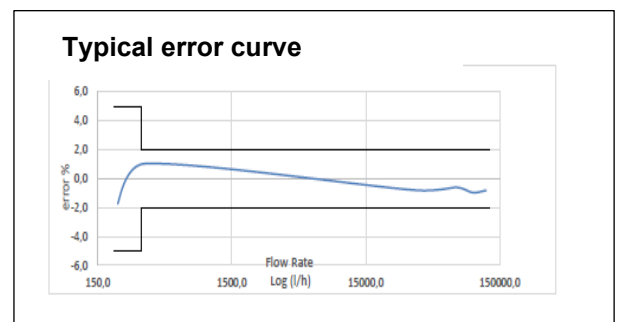
## Head loss diagram



## Connections

Conductor	Signal	Description
White	Pulses	Signal with both forward and reverse flow
Yellow	Direction	Closed contact = reverse flow
Green	Tampering	Contact open = tampering
Brown	Mass	Common
Grey	Forward pulse count	In case of reverse flow the counter records the volume internally. When normal flow is restored, no pulses will be generated until the previously totalled volume value is reset.

## Typical error curve



L'Azienda si riserva di apportare modifiche ai dati tecnici e alle illustrazioni dei prodotti – 04/26



**G2 misuratori S.r.l. -**  
**Via San Martino, 38 – 14100 ASTI (AT) – ITALY**  
**Tel. +39. 0141.721787– Fax +39.0141.702280**  
**E-mail: info@g2misuratori.it**  
**Http://www.g2misuratori.it**

**Filiale Centro-Sud**  
**Via Fontanelle, 3 – 00020 RIOFREDDO (RM) – ITALY**  
**Tel. e Fax +39.0774.920216**  
**E-mail: centrosud@g2misuratori.it**



ISO 9001 - ISO 14001 - ISO 45001  
 UNI/PdR 125:2022

