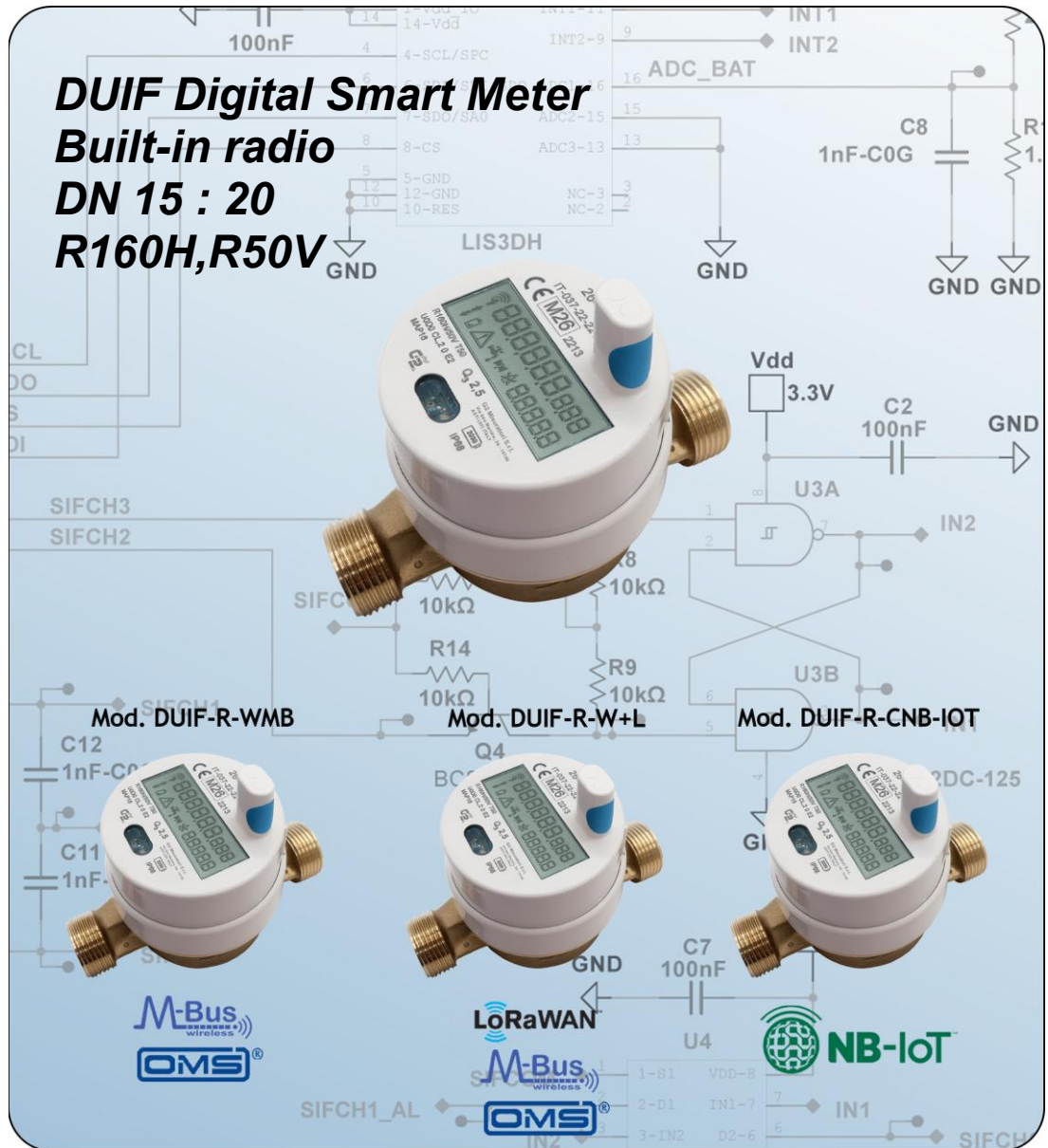




SMART METERS



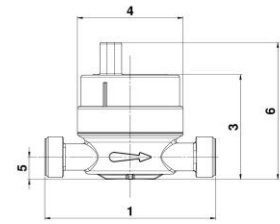
- Smart meter, single-jet meter, direct reading, with a 360° rotating electronic counter and LCD display, featuring radio data transmission:
 - meter with radio module mod. **DUIF-R-WMB** protocol **W-Mbus OMS for Walk-by/Drive**
 - meter with radio module mod. **DUIF-R-W+L** protocol **LoRaWAN for fixed network** + protocol **W-Mbus OMS for Walk-by/Drive**: the system **automatically** switches between the fixed-network protocol and the walk-by/drive-by protocol
 - water meter with radio module mod. **DUIF-R-CNB-IOT** **NB-IoT** with protocol **MQTT***
- Available in sizes DN 15-20, dry-dial, for clean water, temperature class T50
- All models are **MID**-approved in accordance with the current Directive (Module B+D), in compliance with standards **EN 14154** and **OIML R49**, achieving an R (Q3/Q1) rating of up to **160H50V**
- U0-D0: No straight sections of pipework are required upstream or downstream of the meter
- All models are certified for use with drinking water in accordance with Ministerial Decree No. **174 of 6 April 2004**
- Transmitted consumption data, net of any reverse flows
- Multi-layered cryptographic data security
- Available in a LoRaWAN-only version

SMART METERS

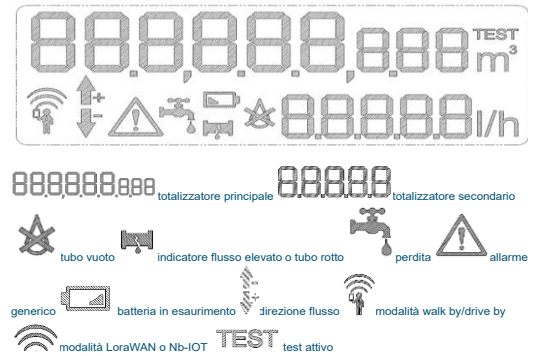
Technical specifications – DN

	15	20
Permanent flow rate Q_3 (m ³ /h)	2,5	4
Overload flow rate Q_4 (m ³ /h)	3,125	5
Transition flow rate Q_2 (l/h)	25	40
Minimum flow rate Q_1 (l/h)	15,6	25
Measuring range R	160	160
Starting flow (l/h)	4	8
Pressure loss class ΔP (bar)	0,63	0,63
Maximum permissible operating pressure MAP (bar)	16	16
Dial display range min / max (m ³)	0,0001 / 100.000	0,0001 / 100.000
1) Length of the meter excluding fittings (mm)	≥ 80	≤ 130
4) Maximum height of standard model (mm)	68	68
6) Maximum height including the antenna (mm)	88,6	93,6
3) Dial height (mm)	67,6	71,7
Weight including fitting kit (kg)	1,2	1,8
5) Height to the pipe (mm)	16	16
Weight excluding fittings (kg)	0,5	0,6
Weight including fitting kit (kg)	0,66	0,84

Overall dimensions



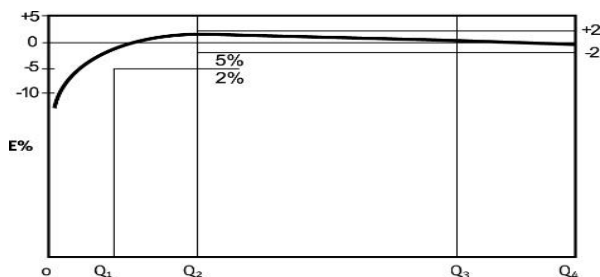
display



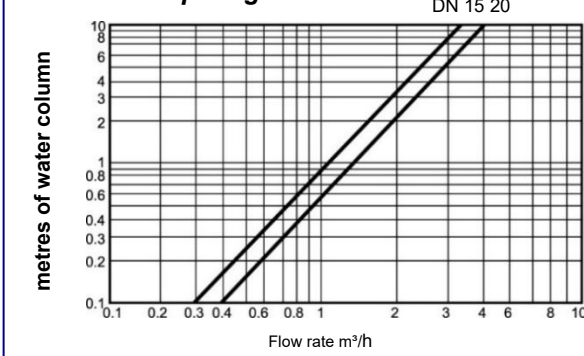
Available options on request:

- DUIC model for hot water**
- LoRaWAN protocol operating at 915 MHz

Typical error curve



Pressure drop diagram



The Company reserves the right to make changes to technical specifications and product illustrations –04/26



G2 misuratori S.r.l. -
Via San Martino, 38 – 14100 ASTI (AT) – ITALY
Tel. +39. 0141.721787 – Fax +39.0141.702280
E-mail: info@g2misuratori.it
[Http://www.g2misuratori.it](http://www.g2misuratori.it)

Filiale Centro-Sud
Via Fontanelle, 3 – 00020 RIOFREDDO
Città metropolitana di Roma Capitale – ITALY

Technical specifications of the radio module

Meter reading	Inductive sensor
Battery life	13 years
Operating environmental conditions	-10 °C ... +55 °C
Enable radio transmission	Via an actuator integrated into the instrument body
Storage temperature	-20 °C ... +60 °C
Protection rating	IP68
Certification	EC, European Directive on Electromagnetic Compatibility

Technical specifications of the OMS-certified W-Mbus protocol

	Walk-by/Drive-by
Network type	Frequency 868 MHz, W-MBus compliant with OMS
Data transmitted	Sensor ID, consumption data, hardware status, battery level, alarms: tampering (removal), reverse flow, low battery, leaks, on-site temperature, on request
Edit configuration data	Possible via radio terminal
Transmission distance	Up to 500 metres in ideal conditions

Technical specifications of the certified LoRaWAN protocol

	Fixed network
Network type	Frequency: 868 MHz, LoRaWAN certified protocol (915 MHz frequency on request)
Data transmitted	Sensor ID, consumption data, hardware status, battery level, alarms: tampering (removal), reverse flow, low battery, leaks, on-site temperature, on request
Edit configuration data	Possible from remote or via a radio terminal
Flexibility	On request the system automatically switches between the protocols LoRaWAN and W-Mbus OMS
Activation	OTAA-ABP
Transmission interval	1 daily reading and 2 daily history reports
Transmission distance	Up to 14 km in ideal conditions

Technical specifications NB-IoT protocol

Transmission	Two-way communication over a fixed network using the NB-IoT cellular standard
Transmission interval	Each 3 days (customisable)
Communication protocol	MQTT
Edit configuration data	Available via remote access and/or local NFC
Data transmitted	Sensor ID, consumption data, hardware status, alarms,
Alarms transmitted	Mechanical tampering (removal), reverse flow, low battery, etc..
Communication interface	NFC for installation, configuration and data recovery
Data-logger	via NFC, with data recovery with mobile App



ISO 9001 - ISO 14001 - ISO 45001
UNI/PdR 125:2022

