

G2 misuratori

THE VALUE OF METERING



Made in
ITALY

SMART METERS



- ❑ Direct reading smart meter with data transmission via radio frequency 868 Mhz, with the protocols listed below.
- ❑ Counter with radio module Mod. UNI-R-CLW LoRaWAN protocol for fixed network and LoRa for Walk-by/Drive-by
- ❑ Counter with radio module Mod. UNI-R-WMB W-Mbus OMS protocol for Walk-by/Drive-by
- ❑ Counter with radio module Mod. UNI-R-W+L LoRaWAN protocol for fixed network and LoRa for Walk-by/Drive-by + W-Mbus OMS protocol for Walk-by/Drive-by: the system automatically switches between fixed network and Walk-by/Drive-by protocols
- ❑ Single jet meter, protected rollers with fully protected dry dial, with mechanical transmission, UO-D0, T50, DN 15-20 **R400H-200V**, DN 25-32 **R200H-100V**, DN 40 **R200H-40V**
- ❑ Inductive transmission between mechanical and electronic parts. Radio module can be replaced
- ❑ All models are MID-approved according to the applicable directive
- ❑ All models are certified for use with drinking water according to D.M. 174 of 6/4/2004
- ❑ Transmitted consumption data, net compensated for any reverse flows
- ❑ Multi-level cryptographic data security
- ❑ Transmitted data: sensor ID, consumption data, hardware status, alarms, battery level, leaks
- ❑ Data security via multi-level encryption
- ❑ Modification of configuration data possible from fixed network remotely and/or via radio terminal
- ❑ Resin-coated IP 68 module for outdoor use - CE certified

SMART METERS



Technical data meter mechanical part
DN in mm - inches

15 - 1/2"

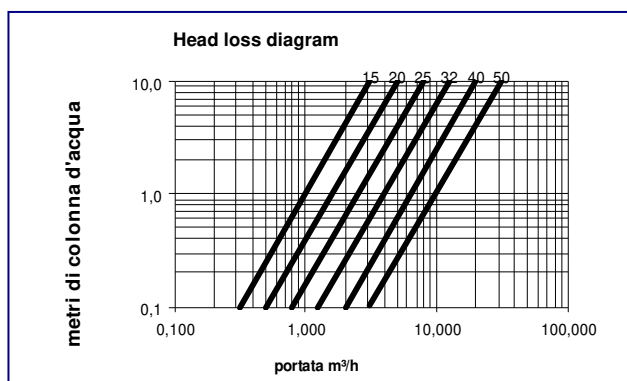
20 - 3/4"

25 - 1"

32 - 1.1/4"

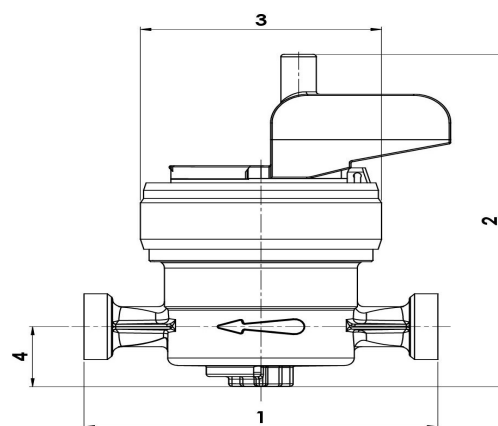
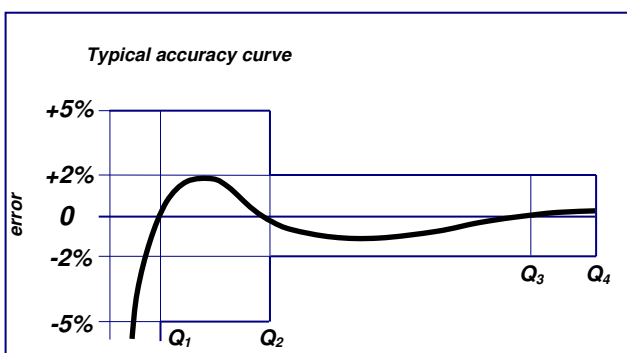
40 - 1.1/2"

Permanent flow rate Q3 (m³/h)	2,5	4,0	6,3	10	16
Overload flow rate Q4 (m³/h)	3,125	5,0	7,875	12,5	20
Transitional flow Q2 with measuring range R400H [MPE ±2%] (l/h)	10	16	-	-	-
Minimum flow rate Q1 with measuring range R400H [MPE ±5%] (l/h)	6,3	10	-	-	-
Transitional flow Q2 with measuring range R200V [MPE ±2%] (l/h)	20	32	-	-	-
Minimum flow rate Q1 with measuring range R200V [MPE ±5%] (l/h)	12,50	20	-	-	-
Transitional flow Q2 with measuring range R200H [MPE ±2%] (l/h)	-	--	50,40	80	128
Minimum flow rate Q1 with measuring range R200H [MPE ±5%] (l/h)	-	-	31,50	50	80
Transitional flow Q2 with measuring range R100V [MPE ±2%] (l/h)	-	-	100,8	160	-
Minimum flow rate Q1 with measuring range R100V [MPE ±5%] (l/h)	-	-	63	100	-
Transitional flow Q2 with measuring range R40V [MPE ±2%] (l/h)	-	-	-	-	640
Minimum flow rate Q1 with measuring range R40V [MPE ±5%] (l/h)	--	-	--	-	400
Starting flow (l/h)	1,5	2	5	7	15
Accuracy class	2				
Environmental class	C (-25°C + 55°C)				
Pressure loss class ΔP (bar)	0,63				
Maximum permissible operating pressure MAP (bar)	16				
1) Length of meter without fittings (mm)	110-115	130	160	160	200
Length of meter including fittings (mm)	190-195	228	260	280	340
2) Maximum overall height (mm)	130	130	150	150	165
3) Maximum overall diameter (mm)	80	80	100	100	110
4) Distance between pipe and meter support surface (mm)	24	24	34	34	42
Weight with connection kit (kg)	0,850	1,10	1,75	2,0	3,46
Weight without connection kit (kg)	0,690	0,86	1,28	1,33	2,42



Radio module specifications

Counter detection	Inductive sensor
Battery life	10 years
Environmental operating conditions	-10 °C ... +55 °C
Radio transmission activation	Via actuator on instrument body
Storage temperature	-20 °C ... +60 °C
Degree of protection	IP68
Certification	CE, European Electromagnetic Compatibility Directive



The Company reserves the right to make changes to technical data and product illustrations.
- 09/25



G2 misuratori S.r.l. -
Via San Martino, 38 - 14100 ASTI (AT) - ITALY
Tel. +39. 0141.721787- Fax +39.0141.702280
E-mail: info@g2misuratori.it
[Http://www.g2misuratori.it](http://www.g2misuratori.it)

Filiale Centro-Sud
Via Fontanelle, 3 - 00020 RIOFREDDO (RM) - ITALY
Tel. e Fax +39.0774.920216
E-mail: centrosud@g2misuratori.it

**AZIENDA CON
SISTEMA DI GESTIONE
CERTIFICATO DA DNV
ISO 9001 • ISO 14001
ISO 45001**