

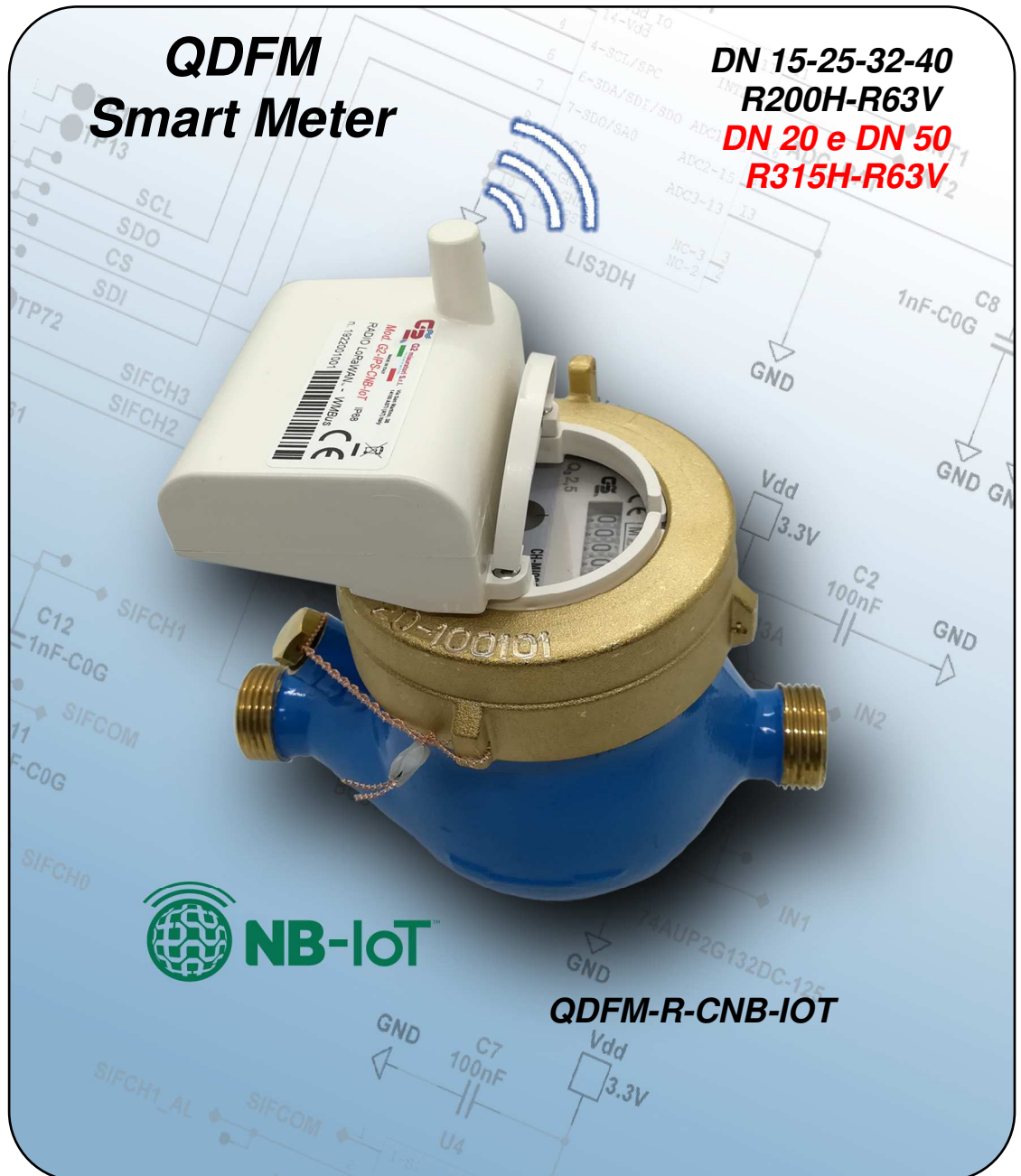
# G2 misuratori

THE VALUE OF METERING



Made in  
ITALY

SMART METERS



- ❑ Direct-reading smart meter with data transmission via fixed network Cellular standard NB-Iot,  
-Counter with radio module Mod. **QDFM-R-CNB-IOT**
- ❑ Multi jet water meter , with fully protected dry roller dial, with mechanical transmission, **R200H R63V**, UO-D0, T50
- ❑ All models can be equipped with a serial number and corresponding bar code or Qr code indelibly engraved on the radio dial and label
- ❑ Inductive transmission between mechanical and electronic parts. **The radio module can be replaced**
- ❑ All models are **MID**-approved according to the current Directive
- ❑ All models are certified for use with potable water according to **D.M. 174 of 6/4/2004**
- ❑ Transmitted consumption data, net offset by any reverse flows
- ❑ Multi-level encrypted data security
- ❑ Transmitted data: sensor ID, consumption data, hardware status, alarms, battery level, leaks
- ❑ Data security through multi-level encryption
- ❑ Modification of configuration data possible from the fixed network remotely and/or via radio terminal
- ❑ Resin-coated IP 68 module for outdoor use- CE certified

# SMART METERS



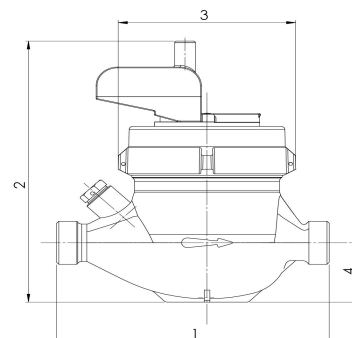
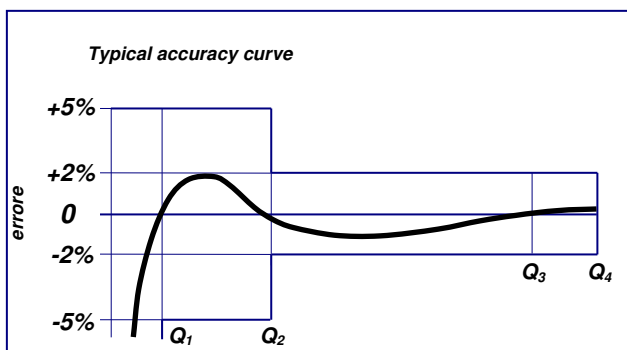
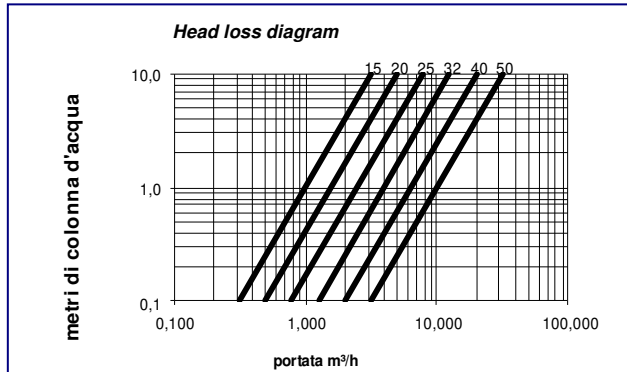
## Mechanical meter features DN in mm - pollici

	15 - 1/2"	20 - 3/4"	25 - 1"	32 - 1.1/4"	40 - 1.1/2"	50 - 2"
Permanent Flow rate $Q_3$ (m <sup>3</sup> /h)	2,5	4,0	6,3	10	16	25
Max flow rate for short period $Q_4$ (m <sup>3</sup> /h)	3,125	5,0	7,875	12,5	20	31,25
Transitional flow rate $Q_2$ at measuring range R200H [MPE $\pm 2\%$ ] (l/h)	20	32	50,40	80	128	200
Min. flow rate $Q_1$ at measuring range R200H [MPE $\pm 5\%$ ] (l/h)	12,50	20	31,50	50	80	125
Starting flow rate at measuring range R200H (l/h)	3	5	8	8	15	18
Accuracy class	2					
Environmental class	C (-25°C + 55 °C)					
Head loss $\Delta P$ (bar)	0,63					
Max working pressure admitted MAP (bar)	16 (25 on request)					
1) Meter length without couplings (mm)	110-115-130 145-165-170 190	130-160-165 190	160-220-260	160-220-260	200-300	300
Meter length with couplings (mm)	190-195-210 225-245-250 270	260-265 290	320-360	320-360	440	460
2) Max height with open lid (mm)	162	162	177	177	187	197
3) Max diameter (mm)	96	96	100	100	136	136
4) Interaxis between pipe and meter surface (mm)	35	35	40	40	60	70
Weight with couplings (kg)	1,650	1,800	3,200	3,500	6,100	9,700
Weight without couplings (kg)	1,500	1,550	2,750	2,800	5,100	7,400

from R40H to R315H FROM R40V to R63V to specify at order – On request non-return valve incorporated in the outlet pipe

## Radio module technical features

Type	Microprocessor device
Power supply	3,6 V lithium battery
Certifications	CE, EMC (elettromagnetic compatibility)
Max pulse frequency	10 Hz
Environnental working conditions	-10 °C ... +55 °C
Storage temperature	-20 °C ... +60 °C
Protection grade	IP68
Battery life	Up to 10 years depending on transmission conditions



AZIENDA CON  
SISTEMA DI GESTIONE  
CERTIFICATO DA DNV  
ISO 9001 - ISO 14001  
ISO 45001

The Company reserves the right to make changes to technical data and product illustrations -



G2 misuratori S.r.l. -  
Via San Martino, 38 – 14100 ASTI (AT) – ITALY  
Tel. +39. 0141.721787– Fax +39.0141.702280  
E-mail: [info@g2misuratori.it](mailto:info@g2misuratori.it)  
[Http://www.g2misuratori.it](http://www.g2misuratori.it)



Filiale Centro-Sud  
Via Fontanelle, 3 – 00020 RIOFREDDO  
Città di Roma Capitale – ITALY  
Tel. e Fax +39.0774.920216  
E-mail: [centrosud@g2misuratori.it](mailto:centrosud@g2misuratori.it)