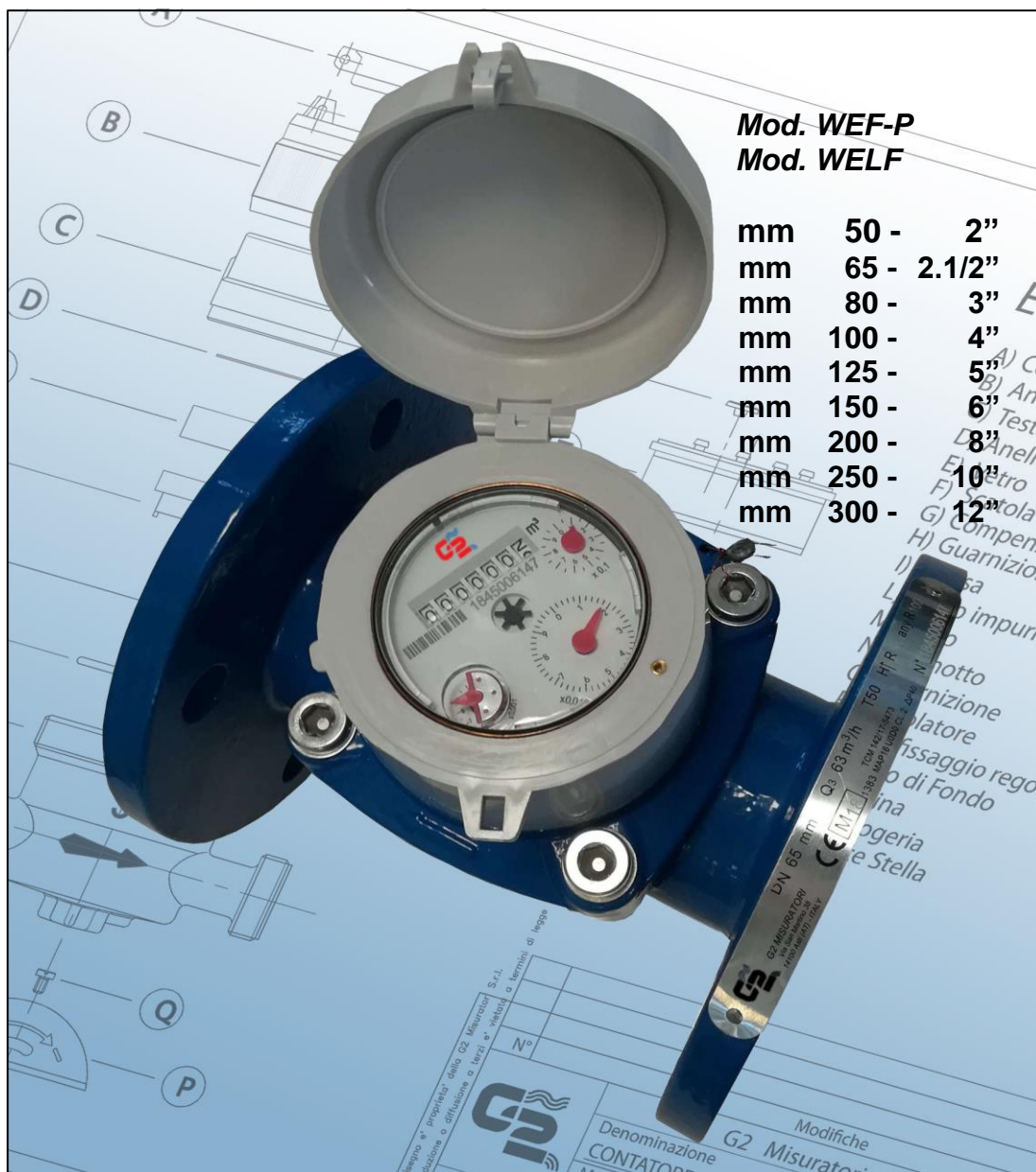




# WOLTMANN<sup>MID</sup>



Mod. WEF-P  
Mod. WELF

mm	50 -	2"
mm	65 -	2.1/2"
mm	80 -	3"
mm	100 -	4"
mm	125 -	5"
mm	150 -	6"
mm	200 -	8"
mm	250 -	10"
mm	300 -	12"

- ❑ Helical vane Woltmann meter, direct reading
- ❑ Mod. **WEF-REMOVABLE** sizes from DN 50 to DN 300, temperature class T50, measuring range R80H and R50H, **preset** for remote reading.
- ❑ Mod. **WEF-REMOVABLE** sizes from DN 50 to DN 300, temperature class T50, measuring range R80H and R50H, **preset** for remote reading.
- ❑ Prepared for reed and inductive remote reading and for radio modules with **LoRaWAN** protocol for fixed network and **LoRA** for walk-by/drive-by, **W-Mbus OMS 868Mhz**, **NB-Iot**
- ❑ Measuring insert replaceable without removing the water meter from the pipeline
- ❑ IP68 DRY dial to use with hard, turbid and very calcareous waters
- ❑ All models are MID approved according to current Directive (module B+D), in compliance with **EN 14154**, **OIML R49** and **ISO 4064 norms**
- ❑ Requirements for upstream and downstream straight pipelines: U5/D3
- ❑ Installation in any position (for non horizontal installation, flow must be upwards); in any case, the meter must be always full of water to ensure a correct functioning

# WOLTMANN MID



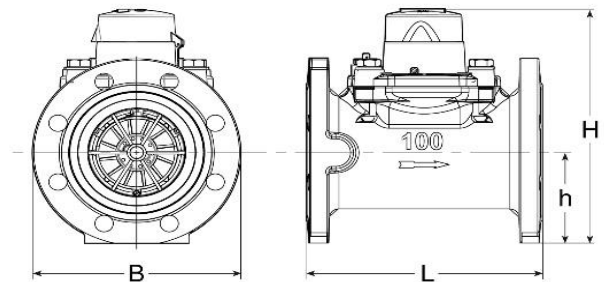
model WEF  
 temperature class T50  
 DN50 / 65 / 80 / 100 / 125/200  
 R from 80H  
 Other R in H and V position  
 available  
 Other Q3 available on request  
 Other K available on request

WEF  
 Temperature Class T50  
 DN 250 / 300  
 R50H

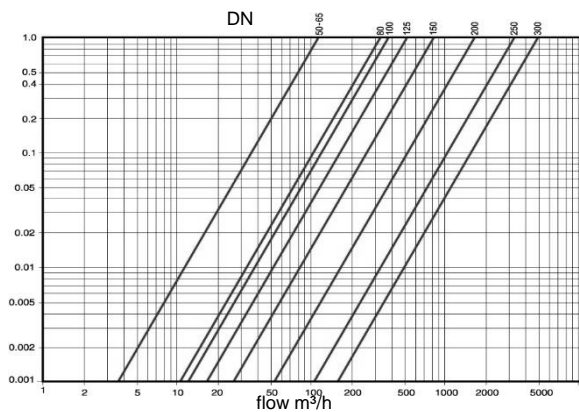
Technical data – DN in mm	50	65	80	100	125	150	200	250	300
Permanent Flow Rate $Q_3$ (m <sup>3</sup> /h)	40	63	100	160	160	250	400	630	1000
Max flow rate for short period $Q_4$ (m <sup>3</sup> /h)	50	78,80	125	200	200	312,5	500	787,5	1250
Transitional Flow rate $Q_2$ R80 [MPE $\pm 2\%$ ] (m <sup>3</sup> /h)	0,80	1,26	2	3,2	3,2	5	8	20,16	32
Minimum Flow rate $Q_1$ R80 [MPE $\pm 5\%$ ] (m <sup>3</sup> /h)	0,50	0,7875	1,25	2	2	3,125	5	12,6	20
Starting flow (m <sup>3</sup> /h)	0,15	0,15	0,25	0,30	0,5	0,8	2	2	3
Measuring Range R	80H	80H	80H	80H	80H	80H	80H	50H	50H
Max allowed working pressure MAP (bar)	16	16	16	16	16	16	16	16	16
Max. possible reading (m <sup>3</sup> )	10 <sup>6</sup>	10 <sup>6</sup>	10 <sup>6</sup>	10 <sup>6</sup> / 10 <sup>7</sup>	10 <sup>6</sup>	10 <sup>6</sup> / 10 <sup>7</sup>	10 <sup>6</sup>	10 <sup>6</sup>	10 <sup>6</sup>
Minimum reading unit (l)	0,5	0,5	0,5	5	0,5	5	50	50	50
Pulse rate For reed switch *	K100	K100	K100	K100	K100	K1000	K1000	K1000	K1000
Pulse rate for inductive sensor *	K10	K10	K10	K10	K10	K100	K100	K100	K100
L) Length (mm)	200	200	225	250	250	300	350	350	450
H) Height (mm)	209	218	249	258	271	316	345	370	463
B) Max diameter (mm)	165	185	200	220	250	285	340	340	405
h) Length between tube -water meter supporting area (mm)	77	86	95	104	117	133	162	172	203
Weight (kg)	10	11,2	15,2	17,2	22,4	29	42,6	41	80



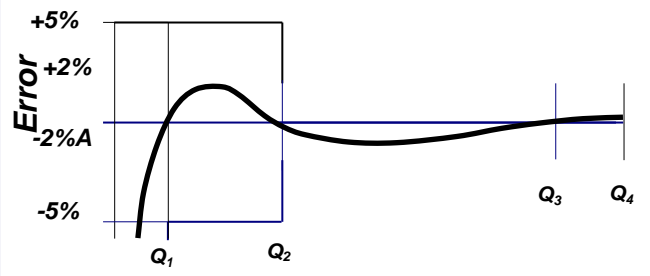
Inductive sensor  
 IPS



## HEAD LOSS DIAGRAM



## Typical accuracy curve



Continuous development of our products may necessitate changes of details and pictures without prior notice-05.20



G2 misuratori S.r.l. -  
 Via San Martino, 38 – 14100 ASTI (AT) – ITALY  
 Tel. +39. 0141.721787– Fax +39.0141.702280  
 E-mail: info@g2misuratori.it  
 Http://www.g2misuratori.it

Filiale Centro-Sud  
 Via Fontanelle, 3 – 00020 RIOFREDDO (RM) – ITALY  
 Tel. e Fax +39.0774.920216  
 E-mail: centrosud@g2misuratori.it

AZIENDA CON  
 SISTEMA DI GESTIONE  
 CERTIFICATO DA DNV  
 ISO 9001 • ISO 14001  
 ISO 45001