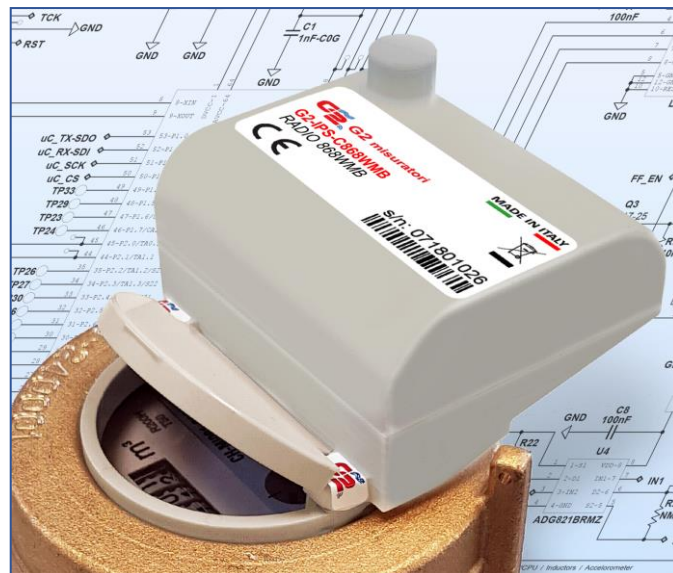


INDUCTIVE SENSOR COMPLETE WITH RADIO MODULE

868 WIRELESS M-BUS
MODEL G2-IPS-CWMB
 for water meters models
AFMS/BFM/QDFM
BFU/PFU/QDFU/
WEF HV prepared

Inductive sensor complete with 868 Mhz Wireless M-Bus radio module, compliant with the OMS protocol, available in compact version, for multiple and single jet meters with wet dial, protected rollers, fully protected dial and superdry, MID approved with **K1** inductive predisposition and for Woltmann WEF HV meters, MID approved, with **K10** predisposition from DN 50 to 125 and **K100** from DN 150. The water quantity is measured by translating the flow of water into the rotation of a non-magnetic semi-metallic disc located on the dial of the meter itself; by detecting the number of rotations, the electronic device calculates the volume of water transited.

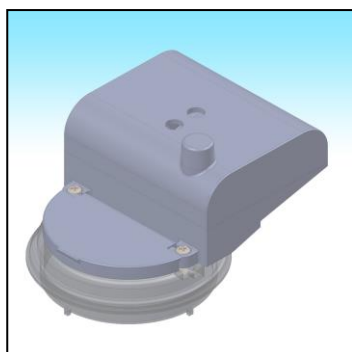


- | | |
|--------------------------------------|---|
| - Transmission | Bidirectional on 868Mhz frequency on Wmbus protocol |
| - Transmission interval | Configurabile adatto a sistemi di lettura Walk-by/Drive-by |
| - Typology of installation | Indoor e outdoor |
| - Consumption data | Net compensated of any possible reverse flow |
| - Data security | Multi-level cryptography |
| - Transmission activation | Through magnet on instrument main part |
| - Modification of configuration data | Remote configuration on fixed network and/or via radio terminal |
| - Transmitted data | Sensor ID, consumption data, hardware status, alarms, battery level, temperature on site on request |
| - Transmitted alarms | mechanical fraud (cable cut and sensor removal), reverse flow, low battery, leakage |
| --Transmission distance | Up to 500mt in optimal conditions |

TECHNICAL FEATURES model G2-IPS-CWMB

Kind of device	Microprocessor device
Power supply	Lithium battery 3,6 V
Battery life	CE, EMC (elettromagnetic compliant)
Max. pulse freq.	10 Hz
Environment operating conditions	-10 °C ... +55 °C
Storage temperature	-20 °C ... +60 °C
Protection rate	IP68
Certifications	10 years

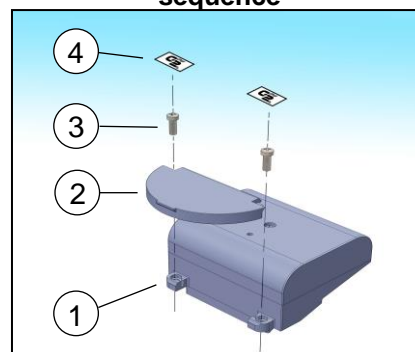
Radio module assembly before



LIST OF COMPONENTS

1. G2-IPS Sensor
2. Dial lid
3. Fixing screws (n. 2)
4. Seal labels (n. 2)

exploded view drawing with assembly sequence



L'Azienda si riserva di apportare modifiche ai dati tecnici e alle illustrazioni dei prodotti -04/20