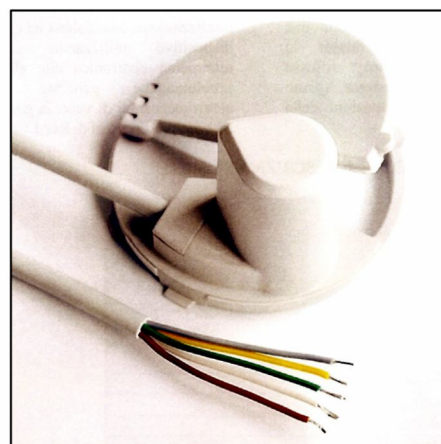
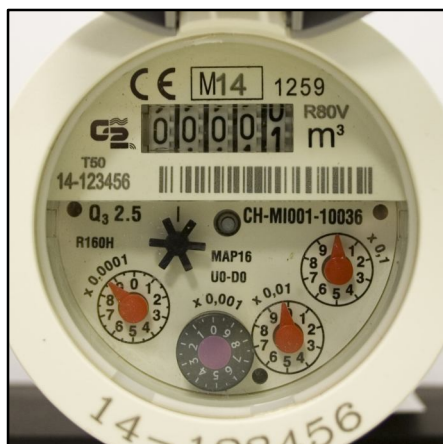


G2 misuratori

contatori d'acqua



WATER METERS MOD. MOD. BFM - BFU / PFM - PFU / QDFM - QDFU
PRESET FOR READOUT SYSTEM WITH "HALL" SENSOR



Multi and single jet meters, wet dial type, liquid filled sealed counter type and fully liquid sealed counter type, MID approved, equipped with a STATIC pulse emitting device, based on Hall sensors.

5 wired- Hall sensor, sensing and transmitting data to a consumption measuring system, which can detect the flow direction.

The combined use of Hall sensors and a microprocessor enables to discover 2 types of tampering:

- The sensor being removed from the meter;
- The cable being severed and external magnets.

FORESEEN TACTICS IN CASE OF TAMPERING:

In case of tampering, the Hall emitting device sends an electronic signal of alert, via one of its 5 wires, to an electronic counter, which records it immediately by signalling.

The device is powered by a 15-year-long life lithium battery. The device guarantees an IP 68 protection class, making it suitable for pitch installations, where flood risk is high.

TECHNICAL FEATURES

Type	Microprocessor device
Power supply	15 year long life Lithium battery
Max pulse frequency	4 Hz
Certifications	CE, European Electromagnetic Compatibility Directives
Environmental conditions	- Working Temperature: -10°C ÷ +55°C - IP68 Protection class

5 WIRED VERSION: OUTPUT FEATURES

Cable length	1,5 m
Output	NPN open collector
Max voltage	30 V (cc)
Max power	100 mA (cc)
Pulse length	With flow rate > 4 pulse/sec: 50% period With flow rate ≤ 4 pulse/sec: 150 ms

The tests on the emitting device, done by the Notified Body, satisfy the provisions set by the law n. 22/07 on legal metrological audits.

Continuous development of our products may necessitate changes in details without prior notice.