

## WATER METERS EQUIPPED WITH AN IMPULSE-EMITTING DEVICE

All models can also be supplied just with pre-arrangement for impulse-emitting device

- ❑ Pulse emitter reed switch with vertical clap-in system
- ❑ Accuracy class: 2
- ❑ **BFUL model** from DN. 15 to DN. 40  
single jet – wet dial – temp. classes T30 e T50
- ❑ **PFUL model** from DN. 15 to DN. 40  
single jet – liquid-filled sealed counter – temp. classes T30 e T50
- ❑ **SFUL and AFUL models** from DN. 15 to DN. 40  
single jet – dry dial – temp. classes T30 e T50
- ❑ **SCUL and ACUL models** from DN. 15 to DN. 40  
single jet – dry dial – temp. classes T70 e T90
- ❑ **BFML model** from DN. 15 to DN. 50  
multi jet – wet dial – temp. classes T30 e T50
- ❑ **PFML model** from DN. 15 to DN. 50  
multi jet – liquid-filled sealed counter – temp. classes T30 e T50
- ❑ **AFML model** from DN. 15 to DN. 50  
multi jet – dry dial – temp. classes T30 e T50
- ❑ **ACML model** from DN. 15 to DN. 50  
multi jet – dry dial – temp. classes T70 e T90
- ❑ **WELF model** from DN. 50 to DN. 300  
helical vane (Woltmann) – dry dial – cold water up to 50°C
- ❑ **WELC model** from DN. 50 to DN. 300  
helical vane (Woltmann) – dry dial – hot water up to 130°C



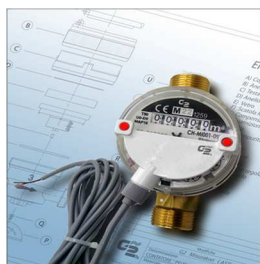
For hydraulic performances and tecnica data please refer to the concerned water meter sheet.

### multi jet and single jet pulse rates (pulse value must be stated when ordering):

0,25	0,5	1	2,5	5	10	25	50	100	250	500	1000
------	-----	---	-----	---	----	----	----	-----	-----	-----	------

### Helical vane (Woltmann) pulse rates (pulse values must be stated when ordering)

<b>WELF model from DN. 50 to DN. 125 – cold water</b>	<b>WELF model from DN. 150 to DN. 300 – cold water</b>
Reed switch sensor: K10 – K100 – K1000	Reed switch sensor: K100 – K1000 – K10000
<b>WELC model from DN. 50 to DN. 125 – hot water</b>	<b>WELC model from DN. 150 to DN. 300 – hot water</b>
Reed switch sensor: K100 – K250	Reed switch sensor: K1000 – K2500



Pulse emitter reed switch, available on request, with side clap-in system for reduced space needs

Continuous development of our products may necessitate changes in details without prior notice – 10/22