

G2 misuratori

water and heat meters

Made in
ITALY



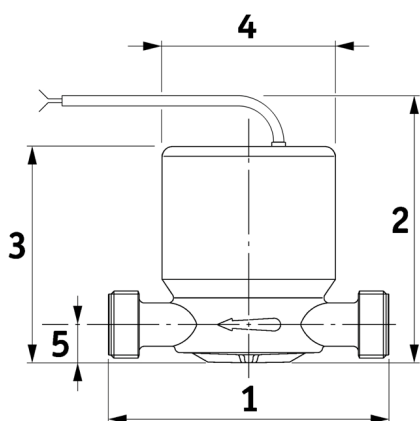
CSCUL DN 15 and DN 20

- ❑ Model CSCUL/15 DN 15 Qp 1,5 m³/h
- ❑ Model CSCUL/20 DN 20 Qp 2,5 m³/h
- ❑ MI004 approved according to Directive 2004/22/CE MID
- ❑ Accuracy class 2
- ❑ U0-D0: straight pipe not required upstream or downstream
- ❑ DN 15 Qp 0,6 m³/h version available upon request
- ❑ 360° rotating dry dial, with magnetic proof metallic cover acting as a shield from external influences
- ❑ Vertical and horizontal installation
- ❑ Max working pressure: 16 bar
- ❑ Reed switch (clean open collector), max. voltage 24V, 0,2 A, 2mt standard length cable
- ❑ Pulse resolution available: K1 and K10 (other K are available on request). Please state pulses values when ordering

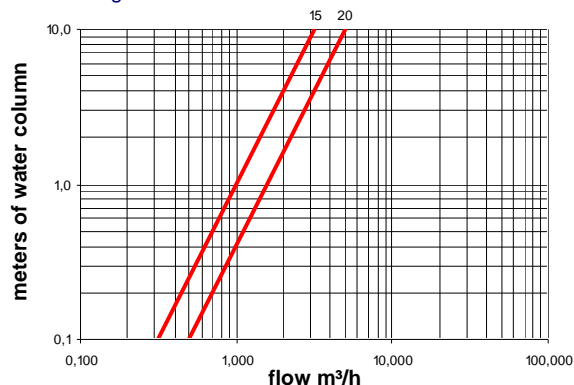


Technical Data

	DN 15	DN 20
Threads (inches)	G3/4	G1
Nominal flow Rate Q _p (m ³ /h)	1,5	2,5
Max flow rate Q _s (m ³ /h)	3	5
Min flow rate with error ±5% (l/h)	30	50
Max working temperature (in brackets is the optional max. working temp. (°C))	90 (120)	90 (120)
1 – Length without couplings (mm)	110	130
Length with couplings (mm)	190	228
2 – Max. height including reed switch (mm)	106,5	110,5
3 – Max. meter height	81,5	85,5
4 – Max. diameter (mm)	71	71
5 – Height of tube (mm)	16	19
Weight without couplings (g)	675	775



Headloss diagram



The company's policy is one of continuous product improvement and the right is reserved to modify the specifications herein contained without notice – 04/18

G2 misuratori S.r.l.
Via San Martino, 38 – 14100 ASTI (AT) – ITALY
Telefono +39.0141.727749 – Telefax +39.0141.702280
E-mail: info@g2misuratori.it – [Http://www.g2misuratori.it](http://www.g2misuratori.it)



Filiale Centro-Sud
Via Fontanelle, 3 – 00020 RIOFREDDO (RM) – ITALY
Telefono e Fax +39.0774.920216
E-mail: centrosud@g2misuratori.it