

G2 misuratori water meters

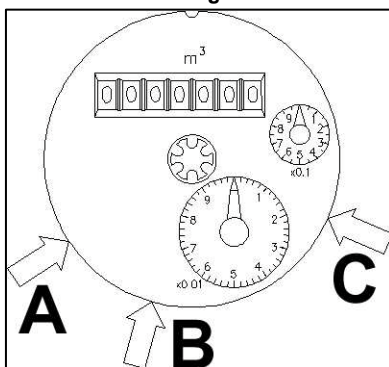


WEI Woltmann meter for not filtered water, at free passage, for irrigation

- ❑ Model WEI DN 50...200, version with cast iron body with flanges
- ❑ Designed for use with irrigation water, not filtered water, even with small suspended particles, directly from reservoir, canals, rivers and artesian wells
- ❑ Transmission of movement through a magnetic joint
- ❑ 360° rotating dumpproof dial - direct reading on numbered drums
- ❑ The water flow through the meter at free passage, reduces head losses at their lowest; the small straight wings turbin, of tangential type, is only partially submerged in water
- ❑ Removable measuring insert; metallic lid with lock
- ❑ Nominal pressure PN 10/16
- ❑ Working temperature 30°C (maximum temperature 50°C)
- ❑ Horizontal, inclined and vertical installation
- ❑ Pre-arranged counter for different pulse generators-reed or opto electronic contact remote reading equipments
- ❑ Model according to the requirements of EEC directive n. 75/33 is available; on request can be sealed with EEC official mark

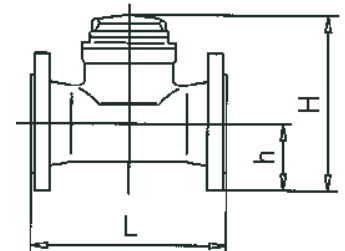
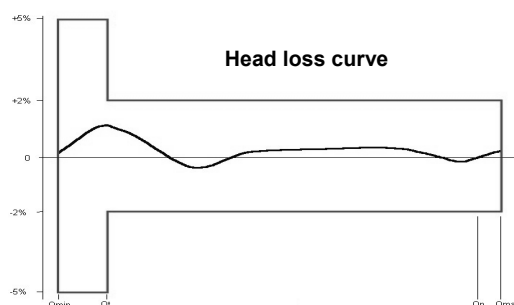


Pre-arrangement



Hydraulic Performances

	50	65	80	100	125	150	200
<i>Q_{max}</i> : Maximum flow rate allowed for short period (m ³ /h)	70	120	120	300	300	500	800
<i>Q_n</i> : Nominal flow rate (m ³ /h)	35	60	60	150	150	250	400
<i>Q_t</i> : Transitional flow rate with error ±2% (l/h)	6	12	12	30	30	50	80
<i>Q_{min}</i> : Minimum flow rate with error ±5% (l/h)	2,4	4,8	4,8	12	12	20	32
Dial register from/to (m ³)	2 / 10 ⁶	2 / 10 ⁶	2 / 10 ⁶	2 / 10 ⁶	20 / 10 ⁷	20 / 10 ⁷	20 / 10 ⁷
<i>L</i>) Length (mm)	200	200	225	250	250	300	350
<i>H</i>) Maximum height to extract measuring insert (mm)	240	250	260	270	285	315	345
<i>h</i>) Tube- flat base interaxis (mm)	75	85	95	105	120	135	180
Pre-arrangement reed (B - C)	0,1 - 1	0,1 - 1	0,1 - 1	0,1 - 1	0,1 - 1	1 - 10	1 - 10
Pre-arrangement opto (A)	0,001	0,001	0,001	0,001	0,001	0,01	0,01
Weight (kg)	11	12	14	18	22	27	40



Continuous development of our products may necessitate changes in details without prior notice

G2 misuratori S.r.l.
Via San Martino, 38 – 14100 ASTI (AT) – ITALY
Telephone +39.0141.727749 – Telefax +39.0141.702280
E-mail: info@g2misuratori.it – [Http://www.g2misuratori.it](http://www.g2misuratori.it)

Branch office for Italy Centre Sud Area
Via Fontanelle, 3 – 00020 RIOFREDDO (RM) – ITALY
Telephone e telefax +39.0774.920216
E-mail: centrosud@g2misuratori.it